

Central Texas Circulator

CHAPTER OFFICERS:

President:

Greg Rodriguez ASSE 6060
361.207.3424

Vice President Technical

Zed Hernandez
713.425.9888

Vice President Membership:

Christopher A. Phillips, CPD,
GPD 210.262.2142

Vice president

Legislative:

Francisco DeHoyos FASPE
773.732.1150

Treasurer:

Andy Chantos

AYP Liaison:

Jacob Prado CPD
210-664-0728

WOA Liaison:

Hayley DeVilbiss

Affiliate Liaison

Stephen Schneider, CPD

Chapter Affiliate Liaison:

Christopher A. Phillips,
CPD,GPD, 210.262.2142

Website / Social Media

Zed Hernandez
713.425.9888

Secretary

Tyler Johnson



Presidents Message



Dear Members,

Welcome, ASPE Central Texas!

As we transition into fall, I want to remind everyone that we have a packed schedule of events and technical trainings lined up for the rest of the year. Be sure to check our webpage for the full list of events and plan to attend them all.

In October, the National Expo will be held in Columbus, Ohio. If you haven't registered yet, please do so as soon as possible. If you have any questions about registration, feel free to reach out to me.

In November, our chapter will host its 2nd Annual Technical Seminars and Product Show. Vendor tables are filling up fast, so reps and vendors, please contact Zed Hernandez to reserve your spot for this year's event.

Finally, we'll wrap up the year in December with our big Holiday Party and Community Giveback. It's going to be a busy and exciting end to the year, so I hope to see you all there!

Warm regards,

Greg Rodriguez
ASPE President



Hello, Central Texas ASPE Chapter!

I'm excited about our upcoming technical lunch meeting this month! I have the honor and privilege of presenting to our chapter, where we'll dive into the important topics of sizing and designing oil separators, solid interceptors, and chemical waste tanks.

I'd love to treat you to lunch, so please join us next week—September 10th in San Antonio at Pappadeaux and September 11th in Austin at Lupe Tortillas.

Looking ahead, we're in for another great session in October with Alex Mathis from Texas Air Systems.

And don't forget to pre-register for our Technical Seminar and Product Show on November 14th in Austin. It's shaping up to be an event you won't want to miss!

I am looking forward to seeing you all there!

A handwritten signature in black ink that reads 'Zed Hernandez'.

Vice President Technical
ASPE Central Texas Chapter

If you are interested in being a presenter and sponsoring lunch for engineers, plumbing designers, city officials, and contractors, please email me at Zed@championsmarkeing.net or call me at 713.425.9888.



Congratulations New CPDs!

We are pleased to announce that the following industry professionals successfully passed the 2024 Certified in Plumbing Design (CPD) exam and now are eligible to use the CPD designation after their names. The CPD program, which is the only international credential program in the plumbing engineering field, sets the standard for leadership within the industry and provides formal recognition of outstanding professionals with advanced skills in the design and specification of plumbing systems. To learn more, visit aspe.org/education-credentialing/cpd.

Houston Chapter

Zakry Steven Davenport, CPD
Shyam Kumar, PE, CPD, LEEP AP BD+C
Luis E. Hernandez Nava, PE, CPD

Central Texas Chapter

Ricardo Emilio Arana, CPD
Daniel Mark Johnson, CPD
Justin Lopes, CPD
Mark Andrew Sislen, PE, CPD
Jay Sukhadia, CPD

Dallas/Ft. Worth Chapter

Abdelrahman Salama Ibrahim Attia, CPD
Christopher Warren Dike, CPD
Alexey Pislegin, CPD
Jorge Luis Rabago, CPD

Membership Stanings

147 Members!

Chapter	Full	Associate	Affiliate	Total	PE	CPD	CPD + PE
Arkansas	25	4	24	53	10	5	0
Central Illinois	16	4	8	31	8	5	0
Central Texas	78	25	42	147	26	28	4
Chicago	140	33	112	294	48	66	20
Dallas/Ft. Worth	133	58	62	260	68	50	16
Houston	105	42	90	244	33	34	15
Kansas City	75	21	29	133	44	17	7
Lubbock High Plains	8	2	1	11	5	0	0
Minnesota	98	11	43	155	44	24	4
Oklahoma	32	6	28	67	16	7	0
Omaha	50	8	16	76	15	14	1
St. Louis	66	17	41	127	33	27	7
Wisconsin	88	32	40	163	34	13	3
Region 5 Total:	914	263	536	1761	384	290	77



Greg Rodriguez ASSE 6060
AYP AUSTIN



Jacob Prado CPD
AYP SAN ANTONIO

Managing Stress in the Workplace: 8 Tips for Young Engineers

Workplace stress is an ever-growing concern, particularly in demanding fields like engineering. According to the American Institute of Stress, job stress is the leading source of stress for American adults, often leading to serious health issues such as hypertension and heart disease. The National Institute for Occupational Safety and Health reports that 40% of workers find their jobs very or extremely stressful, while 75% believe stress levels have increased compared to a generation ago. As engineers, it's vital to find effective ways to manage stress to maintain both personal well-being and professional success. Here are eight practical tips to help you navigate stress more effectively:

Identify the Cause of Stress

Start by identifying what's causing your stress. Whether it's deadlines or workload, breaking tasks into manageable steps and improving time management can help reduce pressure.

Learn to Say "No"

Don't hesitate to decline tasks that would overwhelm you. Provide alternative solutions or timelines to ensure you stay productive without compromising your well-being.

Establish an End-of-Day Routine

Create a habit at the end of each day that sets you up for success tomorrow. This might involve organizing your desk, listing tomorrow's tasks, or sending out a summary email. This routine can reduce anxiety about the next day's work.

Practice Breathing Techniques and Meditation

Integrate simple breathing exercises or meditation into your daily routine to manage stress. Visualize success during your commute, and consciously leave work-related stress behind as you finish your day.

Exercise Regularly

Physical activity is a proven stress reliever. Take short walks during breaks, or build a regular workout routine to help keep stress in check.

Develop Good Technology Habits

Set clear boundaries on your work availability, especially after hours. Limiting after-hours email responses can help maintain a healthier work-life balance.

Designate a Specific Workspace

Keep your work confined to a specific area. Avoid doing work in places meant for relaxation, like your bedroom or living room, to create a clear separation between work and personal life.

Prioritize Sleep

Ensure you get quality sleep to function effectively. Establish a sleep-friendly environment, avoid late-night work, and stick to a consistent bedtime routine.

By applying these strategies, engineers can better manage workplace stress, leading to healthier lives and more sustainable careers.

Source: PEImpact, "8 Tips for Engineers to Reduce Work Stress."



CENTRAL TEXAS

**ZED
HERNANDEZ**

VP Technical - Specifications



LUNCH SPONSORED BY

OIL/SAND SEPARATORS SOLIDS INTERCEPTORS CHEMICAL WASTE TANKS

WHAT WE WILL COVER

- **Sizing**
- **Applications**
- **How they work**
- **Design Requirements**
- **Code Compliance**



10TH SEPT **11:30 Pappadeaux**
76 NE Interstate 410 Loop, San Antonio, TX 78216

11TH SEPT **11:30 Lupe Tortiallas**
10515 N Mopac Expy Bldg R, Austin, TX 78759

REGISTER NOW

centraltexasaspe.org

TECHNICAL SEMINARS AND PRODUCT SHOW

ASPE CENTRAL TEXAS



The University of Texas at Austin
Commons Conference Center

Commons Conference Center
The University of Texas at Austin
10100 Burnet Road, Bldg 137
Austin TX 78758
512-471-5898

NOVEMBER 14TH 2024
8:30 AM-4:30PM SEMINARS
4:30PM - 7 PM PRODUCT SHOW



NOTE: MUST BE A CENTRAL TEXAS ASPE MEMBER TO PARTICIPATE!

SPEAKER + 1 BOOTH- \$750 GET WITH ZED IF INTERESTED IN BEING A PRESENTER. ZED@CHAMPIONSMARKETING.NET OR 713.425.9888 MOBILE

TABLE TOP SPONSORSHIP -\$475

DRINK SPONSORS -\$500 (YOUR COMPANY NAME AND LOGO WILL BE POSTED AT THE BAR)

DRINK TICKETS ARE AVAILABLE TO PURCHASE AT DOOR FOR ENGINEER'S BEER AND WINE ONLY

PRE-REGISTER TO ATTEND ONLINE AT CENTRALTEXASASPE.ORG

BOOTH REGISTRACION FORM



Complete the form below for booth registration

Company Name



PERSONAL INFORMATION

Full Name

Email

Central Texas
Aspe member

YES

NO +Join ASPE @ www.aspe.org

Phone

Email

Booth Info :

60" x 30" exhibit table with 2 chairs, power available upon request. (We will do our best to group booths per rep)

Number of Booths
(Max 4)

One
\$475

Two
\$950

Three
\$1300

Four
\$1700

Technical Speakers:
(1 Booth included)

\$750

Lunch Sponsor

\$500

Bar Sponsor:
(Your company logo at Bar)

\$500

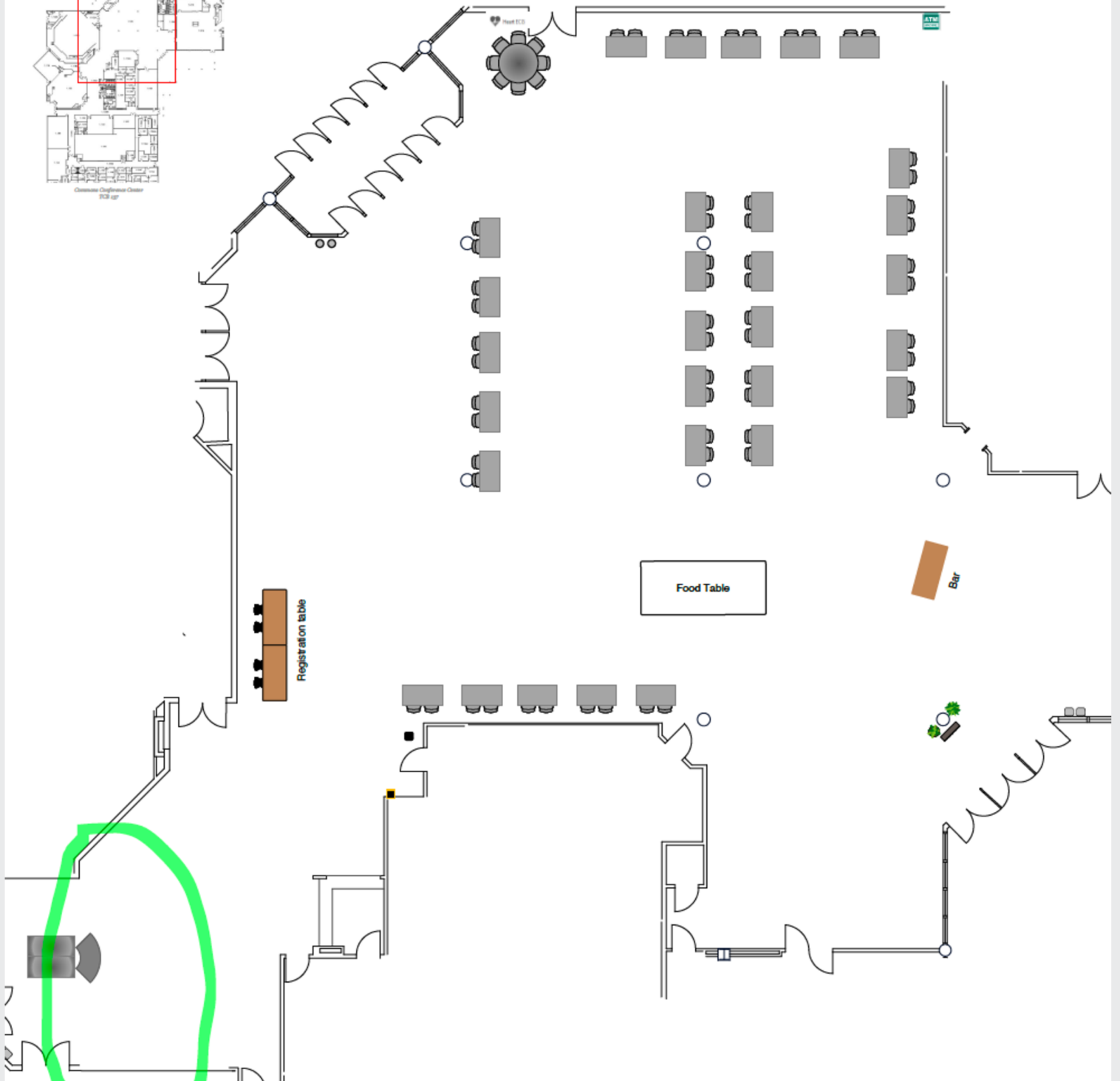
Dinner Sponsor

\$500

EMAIL REGISTRATION FORM TO ZED HERNANDEZ @ ZED@CHAMPIONSMARKETING.NET
FOR INFORMATION CALL ZED AT 713.425.9888 OR GREG RODRIGUEZ AT 361.207.3424

THANK YOU FOR SUPPORTING THE
CENTRAL TEXAS ASPE CHAPTER !

Commons Atrium 1.100



Women of ASPE®



Hayley DeVilbiss

WOA Liaison CT Chapter

As summer ends and cooler weather approaches, it's important to acknowledge that seasonal changes can impact our mental and physical well-being. As you prepare for events like the ASPE National Convention and the Local ASPE Product Show as well as the busy Holidays, it's essential to prioritize self-care.

Did you know that Women, in particular, are statistically more prone to seasonal depression and stress during this time?

Here are some self-care strategies to help:

EXERCISE

Why it matters:

- Boosts mood: Exercise releases endorphins, which are natural mood enhancers, helping to combat feelings of depression.
- Improves energy: Staying active increases overall energy levels, counteracting the lethargy often brought on by colder weather.
- Reduces stress: Physical activity lowers cortisol (the stress hormone), making it easier to cope with daily pressures.

EATING BETTER

Why it matters:

- Stabilizes mood: Eating a balanced diet rich in whole grains, lean proteins, and vegetables helps maintain stable blood sugar levels, which in turn supports stable moods.
- Supports immunity: Cooler weather often brings more colds and flu, so eating nutrient-dense foods can help strengthen your immune system.
- Promotes brain health: Foods high in omega-3 fatty acids, like salmon or walnuts, support brain function and can reduce symptoms of depression.



STAYING HYDRATED

Why it matters:

- Prevents fatigue: Dehydration can make you feel sluggish and tired, which is particularly unwelcome during the darker, cooler months.
- Supports cognitive function: Proper hydration helps with concentration and focus, important for both personal well-being and productivity during busy events.
- Boosts skin health: The cold air can dry out your skin, but drinking enough water helps to keep it hydrated from the inside out.

HEALTHY SLEEP PATTERNS

Why it matters:

- Regulates mood: Sleep is crucial for emotional regulation. Poor sleep patterns are linked to increased anxiety and depression.
- Enhances productivity: A well-rested mind and body are more focused and efficient, which is essential during convention season.
- Supports overall health: Proper sleep is vital for maintaining a strong immune system and reducing the risk of chronic health conditions.

ALLOWING YOURSELF A DAY OF REST

Why it matters:

- Prevents burnout: Continuous work without rest can lead to physical and emotional burnout, making it harder to handle stress.
- Rejuvenates your mind and body: Taking a day off allows your body to recover and your mind to recharge, which enhances long-term productivity and well-being.
- Encourages mindfulness: A day of rest gives you time to reflect, slow down, and focus on your mental health, reducing feelings of overwhelm.

By taking small steps to care for your physical and mental well-being, you'll be better equipped to handle the challenges and opportunities that come with the changing seasons and upcoming professional events.

Thank you,

Hayley DeVilbiss
WOA Liaison CT Chapter



ASPE

**WANTS
YOU**

**INTERESTED IN PLUGGING
INTO YOUR LOCAL CHAPTER?**

**CONTACT: GREG RODRIGEZ 361.207.3424
OR ZED HERNANDEZ 713.425.9888**



SEVERAL VOLUNTEER POSITIONS AVAILABLE

- ~~Administrative Secretary~~
- Corresponding Secretary
- Chapter Committee



Serving the Engineering
Community

ASPE Convention & **EXPO'24**

Columbus, OH  October 18-23



You're Invited to the Largest Event for
Plumbing System Professionals

What You'll Find:

- + New plumbing technologies from more than 250 global exhibitors
- + Practical solutions to your plumbing design challenges directly from product engineers
- + A show floor filled with industry experts providing hands-on technical solutions
- + New skills from professional development and technical education sessions

250+ exhibitors **4,000+** professionals **25+** sessions

expo.aspe.org

REGISTER NOW!

What is ASPE?

The **AMERICAN SOCIETY OF PLUMBING ENGINEERS** (ASPE) is the only organization dedicated to promoting the plumbing engineering profession to both enhance career opportunities for our members and ensure the health, safety, and well-being of the public through the design of safe plumbing, drinking water, and sanitation systems.

WHAT WE DO



Provide continuing professional education programs



Publish design manuals, tools, and standards



Host conferences, tradeshow, and networking events



Certify professionals skilled in plumbing system design



Promote safe and sustainable water and sanitation systems



Represent the industry in local and national government



Help develop safe plumbing and building codes and standards



OUR MEMBERS

Our members are individuals working in various professions related to plumbing system design.

← What Is Plumbing Engineering?

Plumbing engineering is a vital part of the design/build construction process. Plumbing engineers use the principles of fluid flow with engineering calculations to design plumbing systems that transport fluids such as water, wastewater, natural gas, and rainwater throughout buildings.

WHAT IS A Plumbing Engineer?

PLUMBING ENGINEERS are a vital part of design/build construction teams for residential, commercial, and industrial facilities. They interact with other construction trades to provide building owners with efficient, functional, and sustainable plumbing systems that protect the health, welfare, and safety of the public and prevent environmental contamination.

WHAT DO PLUMBING ENGINEERS DO?

PLUMBING ENGINEERS use the principles of fluid flow along with engineering calculations to design plumbing systems that transport fluids and gases throughout buildings. Those systems include:

$$S = \frac{\text{rpm}\sqrt{Q}}{\text{NPSH}^{0.75}}$$
$$\times 2.31 - h_f, L_h + \frac{(P_b - V_p)}{\text{Specific gravity}}$$



Domestic water systems



Wastewater



Fuel gas



Medical gas & vacuum



Compressed air



High-purity water



Fire suppression



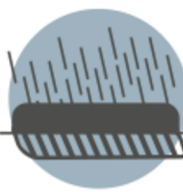
Chemical waste



Rain & stormwater systems



Venting



Site & building drainage



Water efficiency

WHAT DOES THE PROFESSION ENTAIL?

"The old adage that 'anyone can do plumbing' does not hold water anymore. A diversified and accomplished plumbing engineer is a valuable commodity in the design/build market."



PLUMBING ENGINEERS are highly skilled individuals involved in many different aspects of the design/build process, including:

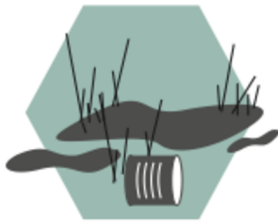
PLUMBING SYSTEM DESIGN	COMMISSIONING
PROJECT MANAGEMENT	CODE & STANDARD EXPERTISE
CONSTRUCTION ADMINISTRATION	FORENSIC & SUBSURFACE SYSTEM EVALUATION
BUILDING INFORMATION MODELING (REVIT)	COST ESTIMATION
PRODUCT & SYSTEM SPECIFICATION	PROBLEM SOLVING

PROTECTING PEOPLE & THE ENVIRONMENT

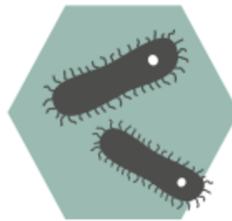
PLUMBING ENGINEERS help eliminate many of the threats that sicken people and harm the environment on a global scale by:



Delivering safe drinking water & sanitation systems



Combating groundwater contamination & depletion

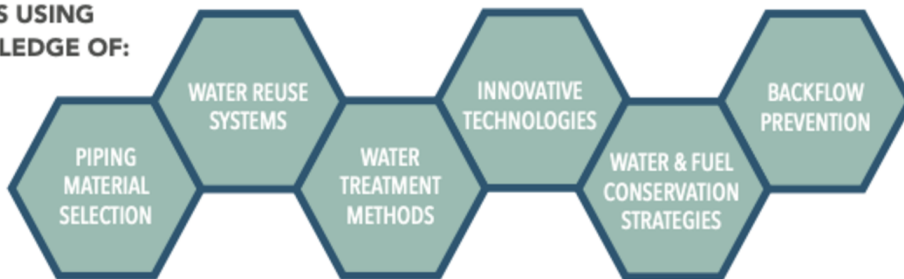


Preventing waterborne diseases



"Through their designs, plumbing engineers affect every life."

THEY DO THIS USING THEIR KNOWLEDGE OF:



HOW TO LEARN MORE

The American Society of Plumbing Engineers (ASPE) is the only association dedicated to promoting the plumbing engineering profession and helping plumbing engineers advance in their careers. Our members have a wealth of knowledge and experience and are ready to help others learn more about the industry.



To discover ASPE and find local contacts, visit:

[aspe.org](https://www.aspe.org)



Connect with Us



Making the Most of Your Membership

MEMBER BENEFIT TIP #1 - BUILD A KILLER NETWORK

One of ASPE's greatest benefits is its members. Everyone is busy at home and at work, but members who attend Chapter meetings, [Conventions & Expositions, and Symposiums](#) are more likely to build a killer contact list. Our members are eager to help you in your next plumbing engineering problem, which undoubtedly will make you more competitive in the workforce.

Whether you are in sales or engineering, you sell yourself every day. ASPE has many networking opportunities for you to meet professionals who possess the skills and training necessary to help you out of a tight spot or put you in touch with someone who can help you. If you are outside your comfort zone, ask your Chapter Board to make the introductions. Exchange business cards and remember to follow up with a brief conversation or email thanking them for their time. Before you know it, you will be a pro in engaging other members, which will lead to career growth and prosperity. If you are not able to attend a Chapter meeting, [ASPE Connect](#) offers you a way to build your network online.

MEMBER BENEFIT TIP #2 - ASK A MEMBER FOR HELP

Being a member in ASPE enables you to call upon a friend for help. Your Chapter Officers know who does what. Call your [Chapter leaders](#) when you are stumped on the job and ask for help. More times than not, you will find a fellow member who is more than willing and able to assist you with your problem. If they can't help, kick it up to the [Region Director](#), and they will find you the help you need. ASPE members treat other members just like family; it's our single most valuable membership benefit.

MEMBER BENEFIT TIP #3 - BOOST YOUR INDUSTRY VISIBILITY

Demonstrate your abilities to lead and boost your industry visibility by volunteering to join your Chapter Board of Directors or apply to join the [Society Board of Directors](#). Employers, clients, and coworkers respect and look up to ASPE Chapter and Society Officers. Without our leaders, we would not have a Society; it's worth the work.

MEMBER BENEFIT TIP #4 - EXPAND YOUR KNOWLEDGE AND EARN CEUs

ASPE produces webinars for members to expand their knowledge of plumbing systems and design. Members pay about half the price as nonmembers and if the webinar is sponsored, members can participate for free, so this is a great member benefit. Hover over Education & Credentialing in the [aspe.org](#) main menu, and then click on [Webinars and Workshops](#). You can access current webinars as well as every webinar ASPE has ever held. Don't forget to recommend these to your colleagues and clients.

Through our special Read, Learn, Earn series, ASPE also can help you accumulate the CEUs required for maintaining your CPD or CPDT credential or other regulatory agency CEU programs for your Professional Engineer license. Here is how you do it. Go to [aspe.org](#), hover over Education & Credentialing, and in the left column you will see [Read, Learn, Earn](#). Click on it and it will take you to a page with the active materials. This benefit is free to members and \$35 for nonmembers. Download one of the articles, read, learn, and earn your CEUs. When you complete the payment screen, the system guides you through the questions and you can enter your answers directly into the system. (Note that members do NOT need to add a credit card.) Voila! If you get 90% correct, you will receive your 0.1 CEU in the email specified in your account.

MEMBER BENEFIT TIP #5 - TRACK YOUR CEUs

We've seen some extraordinary new things come out of ASPE in the past couple of years, but this benefit is as good as it gets. Did you know that you can track your CEUs in your member area on [aspe.org](#)? Well you can, and here is how:

1. Under Education & Credentialing in the [aspe.org](#) main menu, in the left column click on [Continuing Education](#). You have now entered the ASPE Education website.
2. In the menu click on [My Education](#). (You must be signed in to see My Education.) This takes you to your dashboard.
3. Under My Dashboard, click on Transcript/Achievements.

All of your ASPE-sponsored CEUs will already be populated in this table, but you can also add other CEUs from other sources. Simply click on the link toward the top of the table and the site will direct you to a page to add the session information and to upload a certificate.

This member benefit is invaluable in keeping your CEUs current, and it's only offered to members. Don't get caught empty-handed when the eventual audit for your credential comes around.

MEMBER BENEFIT TIP #6 - MEET POTENTIAL CLIENTS/MEMBERS

If you are an Affiliate member, in sales, who steps up and takes on a membership role, you are in a unique position to promote ASPE and your company. Your leadership role is a valuable way to place yourself in front of prospective clients and members. Talk to your Chapter Board of Directors and see what you can do to promote yourself and ASPE.

MEMBER BENEFIT TIP #7 - LEARN HOW TO MENTOR OTHERS

ASPE has mentor opportunities so you can help foster the career of another member. Opportunities are available for all members. Just click on [Mentoring Program](#) under Membership & Global Community on [aspe.org](#) for more information. Leave your mark on our Society.

MEMBER BENEFIT TIP #8 - ADD LETTERS TO YOUR NAME

We all market ourselves every day with everything we do, and ASPE can help with programs that can add letters to your name: our [Certified in Plumbing Design \(CPD\)](#), [Certified Plumbing Design Technician \(CPDT\)](#), and [Green Plumbing Design \(GPD\)](#) programs. These programs will help others instantly recognize your leadership and expertise in the plumbing design industry.

MEMBER BENEFIT TIP #9 - ACCESS YOUR ASPE ACCOUNT

Accessing your ASPE account has never been easier. Visit [aspe.org](#) and click on the [LOGIN](#) tab in the upper right-hand corner. If you know your username or email address and your password, enter them and you will be done. If you do not know your username and password but know your email address, click on the "Request a New Password" tab. A temporary password will be sent, but be sure to change it when you log in. If you do not know your username, you can try your last name followed by your member number, just the digits. For example: jones12345.

Having trouble logging in to your ASPE account or you can't remember your member number? No worries. Your Chapter Vice President, Membership has a roster with this information. Call or email them and they will be happy to help you access your account.

MEMBER BENEFIT TIP #10 - MEMBERSHIP RENEWAL

ASPE has made it easier than ever to renew your membership. Log in to [aspe.org](#) as you ordinarily do and then to the left of the login button is a green "[Join/Renew](#)" button. Just click and you'll be renewed in no time. **NOTE: If you have lapsed for more than 90 days, your account was purged from the membership database and you will need to reapply for membership.**

MEMBER BENEFIT TIP #11 - SPECIAL-INTEREST GROUPS

[ASPE Young Professionals \(AYP\)](#) is designed for young industry professionals looking to meet with peers to share experiences, exchange ideas about the plumbing design industry, and network with other Chapter members. The focus of AYP is to help young plumbing engineers, design professionals, and practitioners establish contacts and further the mission of the Society. ASPE members 35 years old and younger are all included in this special-interest group.

The core mission of the [Women of ASPE \(WOA\)](#) is to engage, retain, and advance women in the plumbing design industry, through education, leadership development, and networking opportunities. WOA is committed to bringing together women and assisting them to achieve their professional and personal goals.

MEMBER BENEFIT TIP #12 - ASPE TABLES

The [ASPE Plumbing Engineering & Design Handbook of Tables](#) is a tool to help members with pipe sizing, equations, and more. This information is available not only as a book, but it is also available in both the Apple App Store and in the Google Play Store, offering members a portable way to access these valuable tables from their phones. More recently, the tables have become available for download to your Mac or PC. Just visit the [ASPE Bookstore](#) and you can have these tables at your fingertips.

MEMBER BENEFIT TIP #13 - CAREER CENTER

ASPE's Career Center is a valuable tool for ASPE members seeking new jobs or those looking for experienced plumbing engineers to join their team. Just hover over Membership & Global Community in the [aspe.org main menu](#) and click on [Career Center](#) to get started.

HOW TO BECOME AN ASPE VOLUNTEER

*Recognize Leadership
and Professional
Growth Opportunities
Through Participation
in ASPE*



Participation in ASPE

As the voice of the plumbing engineering industry, ASPE is sought out to provide the latest technical and legislative information as well as education and career growth opportunities for plumbing system design professionals. ASPE is dedicated to the advancement of the science of plumbing engineering, to the professional growth and advancement of our members, and to the health, welfare, and safety of the public, but we need the experts—our members—to help fulfill those goals. Your practical experience and knowledge will help ASPE provide top-notch service for our ASPE family members and other industry professionals worldwide.

Becoming involved is not a one-way street. Volunteering provides you with resources to keep up with the technical aspects of our industry. You will make new contacts and increase your voice. You also will have direct influence on plumbing engineering and become a recognized leader in the industry.

Here are some ways you can get involved to help foster technical innovation and professional advancement.

Become a Mentor

ASPE's new Mentoring Program is designed to connect ASPE members who have a particular skill set (mentors) with individuals (mentees) who are searching to acquire the same skills to make progress toward their personal and professional goals. Mentors gain satisfaction and personal fulfillment while helping others discover new talents and grow in the industry. To learn more, go to <https://connect.aspe.org/aspe-mentor-match/mentoring>.

Run for National Office

Every two years, Chapter delegates vote on the 12 national officer positions. Serving on the ASPE Board of Directors is the highest level of volunteerism and marks individuals as achieving the pinnacle of leadership within the Society. To learn more about becoming a candidate, review the Guide to the Board of Directors Nomination Process on the members-only page: <https://www.aspe.org/membership-global-community/membership/members-only/>.



Join Your Chapter Board of Directors or a Committee

With more than 60 ASPE Chapters worldwide, volunteering at the Chapter level is one of the easiest ways to become involved with ASPE. Volunteering at the Chapter level helps you develop a better understanding of how the Society functions and how to receive the most benefit from your membership, while also contributing to the betterment of ASPE.

ASPE's Chapters are run by dedicated individuals who provide high-quality technical and networking opportunities for local industry members. Many levels of participation are available: positions range from being the newsletter editor or golf outing chair to vice president, technical and president. By becoming a Chapter leader, you will increase your presence in your local area while helping others grow and succeed.

To learn about the roles of Chapter officers, go to <https://education.aspe.org/products/chapter-officer-training-video>.

If you aren't ready to join the Chapter Board of Directors, volunteering for a Chapter committee is the perfect way to get your feet wet. Contact information for your local Chapter can be found at <https://www.aspe.org/membership-global-community/chapters/>.



Share Your Expertise

Volunteering doesn't necessarily mean a long commitment. Several opportunities are available to share your knowledge and skills on a short-term basis.

- You can review and revise a chapter in one of the four Plumbing Engineering Design Handbooks, which are updated annually. Contact gpienta@aspe.org.
- You can present a one-hour webinar on a technical topic of interest to plumbing engineers. Contact education@aspe.org.
- You can write an article for ASPE's members-only publication, ASPE Journal, or Plumbing Engineer magazine. Contact gpienta@aspe.org.
- You can present a technical session at either the Technical Symposium or the Convention. Sessions range from 75 minutes to three hours. Contact education@aspe.org.

Serve on a National Committee

ASPE's Committees provide the backbone to the Society's operations. Committees are responsible for providing input on policies and procedures regarding everything from ASPE's technical publications and educational programs to the career growth of special-interest groups. Membership in the following Committees is available:

- Membership Committee
- Technical & Research Committee
- Education Committee
- Legislative Committee
- Long-Range Planning Committee
- Nominating Committee
- Bylaws Committee
- Finance Committee
- Credentialing Committee
- Main Design Standards Committee
- ASPE Young Professionals
- Women of ASPE
- Convention and Exposition Committee
- Technical Symposium Committee

To apply for a national Committee, just fill out the application found here: <https://www.aspe.org/membership-global-community/committees/>.



ASPE's Board of Directors and staff appreciate you volunteering and providing your knowledge and experience for the betterment of the Society, the advancement of plumbing engineering, and the protection of the public's health and safety. Thank you for your support.



HOSPITALITY



BARRIER-FREE

The Most Specified Brand in the Industry

**FIAT
PRODUCTS**



RESIDENTIAL



COMMERCIAL

Visit our website at
www.FIATPRODUCTS.com



Curtis Dady
(346) 287-6939
CurtisD@PMIreps.com

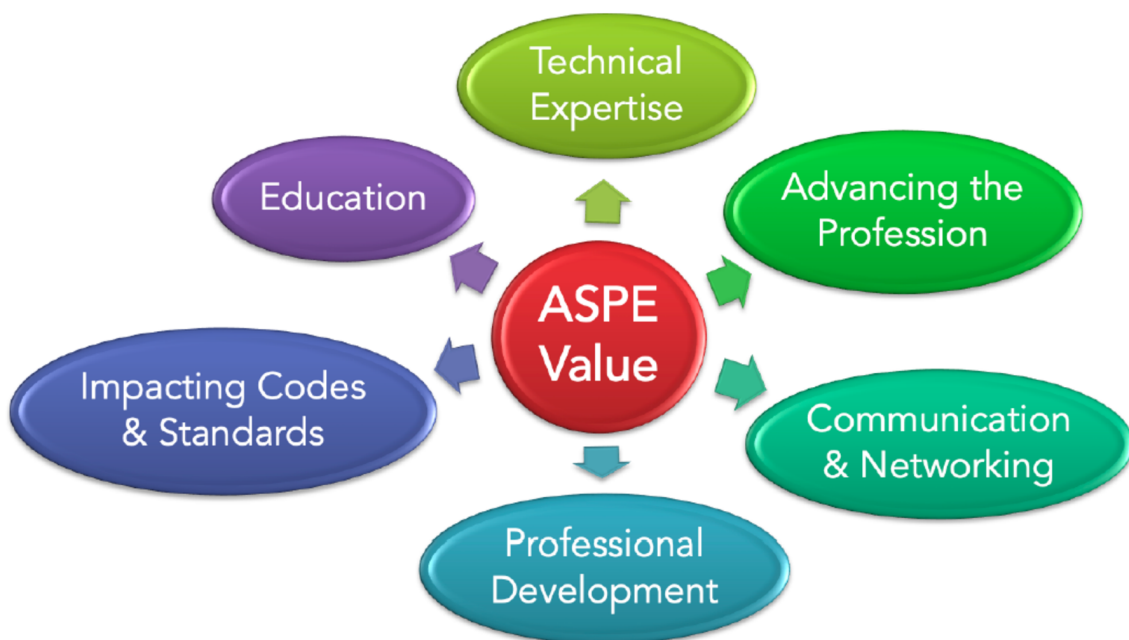


Connect with us
on Social Media!



ASPE Purpose

The core purpose of the American Society of Plumbing Engineers is to continually enhance and promote the profession of plumbing engineering design while assisting in improving the health, welfare, and safety of the public on a global scale.



CPDT CERTIFIED PLUMBING DESIGN TECHNICIAN®

HOW THE CPDT CREDENTIAL CAN ACCELERATE YOUR CAREER IN PLUMBING ENGINEERING

Due to its niche nature, plumbing engineering offers a long, stable, and profitable career, but breaking into the profession can be challenging if employers aren't aware of your unique skills. That's where the Certified Plumbing Design Technician (CPDT) credential can help. As the only credential

specific to plumbing system designers early in their careers, the CPDT provides immediate recognition of individuals skilled in this trade.

That's why Ashley Turlington, CPDT, recommends earning the designation. "Companies seek candidates with credentials

pertinent to their field," she says. "The CPDT can open up a lot of professional opportunities."

DEMONSTRATE YOUR TECHNICAL KNOWLEDGE

Administered by the American Society of Plumbing Engineers (ASPE), the CPDT program provides a standard of professional competence in the practice of plumbing design at the technician level. Employers are assured that designers who have earned the CPDT credential have the requisite knowledge and skills to excel in their company. This is one of the primary reasons individuals pursue the designation. "I earned my CPDT credential to demonstrate my technical knowledge of plumbing, and it has given me better recognition as a well-rounded plumbing designer," says John Lansing, CPDT, LEED Green Associate.

VALIDATION OF YOUR ACCOMPLISHMENTS

Through its rigorous processes, the CPDT program identifies professionals who have demonstrated their expertise and abilities in the field of plumbing design. The certification exam tests an individual's proficiency in skills that employers desire, such as laying out systems, sizing calculations, selecting equipment, and preparing documentation. The test specifications and content reflect the abilities essential to performing at the technician level of a plumbing designer.

The CPDT credential gives you "more respect, validation of your accomplishments, and [subsequently] more compensation," says Justin Wroblewski, CPDT.

IMPROVE YOUR VALUE TO YOUR COMPANY

The CPDT program's recertification requirement means that CPDTs must stay current on new techniques and technologies through continuing education, which is a desirable trait to employers who are looking for an edge in the competitive MEP market. Having CPDTs on their staff showcases a firm's expertise and their commitment to maintaining the highest, most up-to-date design standards.

"My CPDT credential has allowed my company to get better jobs because clients view us as more knowledgeable," Turlington says.

And the benefit is mutual. "Taking the step to improve your value to your company will also benefit your career," says Wroblewski.

HOW TO ACCELERATE YOUR CAREER

The CPDT program is designed for plumbing system designers with less than eight years of professional experience, and the exam is held annually at online testing sites around the world. If you are planning on achieving ASPE's internationally renowned Certified in Plumbing Design (CPD) credential, the CPDT is an excellent starting point.



2024 Exam Registration Is OPEN

cpdt CERTIFIED PLUMBING
DESIGN TECHNICIAN
AMERICAN SOCIETY OF PLUMBING ENGINEERS

Register Now for the CPDT Exam

Attention young designers: Become a CPDT this year to showcase your plumbing design expertise! The 2024 Certified Plumbing Design Technician (CPDT) exam will be held via remote proctor from October 28 to November 8, and registration is now open at ASPE Education. The deadline to register is October 20. [Learn more>>](#)

ASPE Convention &
EXPO'24
Columbus, OH | October 18-23

Don't miss the early bird rate!

Don't Miss Your Chance to Save

If you are joining us in Columbus for the 2024 ASPE Convention & Expo, be sure to register by July 25 to get the early bird rate. Our Convention & Expo is the ONLY event designed to enhance the professional development, education, and career growth of plumbing design professionals, so register today at expo.aspe.org to secure your spot.

Congratulations to Our New Chapter!

We are pleased to announce the formation of ASPE's newest Chapter—the Southern Indiana Chapter. Formerly the Evansville satellite, the Chapter met the requirements of ASPE's Bylaws and the *Policy & Operations Manual* and petitioned for charter, which was approved by the Board of Directors at their July Board meeting. The new Southern Indiana Chapter will hold its charter ceremony in September.

Women
of ASPE

Now Accepting Scholarship
Applications

ASPE Convention &
EXPO'24

MedGas
Workshop

American Society of Plumbing Engineers

September 26-29, 2024
Grand Rapids, MI

Hosted by:
BRADFORD WHITE
WATER HEATERS

Deadline Is Coming Soon

Reminder: WOA is offering a scholarship to help a deserving member attend the 2024 ASPE Convention & Expo. Don't miss out on this great opportunity! The deadline to apply is July 31. [Apply now>>](#)

Get In-Person ASSE 6060 Training

You can get the 32 hours of training you need for ASSE 6060 certification at our next in-person MedGas Workshop on September 26-29, 2024 at the Bradford White facility in Grand Rapids, Michigan. [Register now>>](#)

MEET THE GREAT BASIN™ FAMILY



San Antonio and Austin Approved!

Contact Zed Hernandez at 713.425.9888 or zed@championsmarketing.net to help you size your next project.



▲ Our new GB-1000 being installed at Costco in Independence, Missouri



SCHIER

REPRESENTED BY



GM GREASE MONKEY™

Size your project with Grease Monkey.
GreaseMonkeySizing.com

LIFETIME GUARANTEED GREASE INTERCEPTORS

ASPE

Mentoring Program

This program, which is available to all members of the Society, has been designed to connect ASPE members who have a particular skill set (mentor) with individuals (mentee) who are searching to acquire the same skills to develop and make progress toward their personal and professional goals.

Who Is a Mentor?

A mentor is someone who can help the mentee develop skills for success and long-range career planning, is able to be a good listener, is willing to share experiences and views, is willing to commit time and effort, provides an “open door” to questions and problems, points out both strengths and opportunities for improvement, and has a vested interest in the growth and development of their mentee.

Benefits to the mentor:

- Satisfaction in helping someone mature, progress, and achieve goals
- Meeting and sharing experiences with other mentors
- Personal ongoing support to help the mentee succeed
- Personal fulfillment through contribution to the Society and the individual

Who Is a Mentee?

Having a mentor can contribute to a successful and satisfying career. Without a mentor, that learning occurs mostly through trial and error. With a mentor, even experienced professionals can benefit from the experiences and expertise of someone who has withstood the trial and can help the mentee avoid the mistakes. Similarly, those new to the industry will discover that being a mentee shortens the learning curve for acquiring the skills and knowledge most critical to a fruitful career.

Benefits to the mentee:

- Discover new talents about yourself
- Career satisfaction
- Expand your personal network
- Maximize your strengths

connect.aspe.org



AT LAST - IT'S ARRIVED!



Just what you've been waiting for!

Independent third-party performance verification under a US test protocol for a Physical Water Conditioner - the alternative to the conventional water softener.

- **AT LOW COST**
(You can't afford not to treat hard water anymore)
- **ZERO PLANT ROOM FOOTPRINT**
(Attaches to the wall or to pipe work)
- **ZERO SERVICING**
(No Salt)
- **ZERO MAINTENANCE**
(Which means it is 100% reliable)
- **WARRANTED FOR 20 YEARS**



Case Study: Panorama Towers, Las Vegas, NV.

Cost to install: **\$55,000** ✓
 Savings over conventional softener in year one: **\$168,000** ✓
 Estimated 3-year savings: **\$500,000** ✓
 Annual Running Costs: **\$200**

Download the Engineer's Specifier Guide from www.aqua-rex.com

Scale Down. Soften Up.



TEST REPORT

5001 E. Philadelphia Street
Ontario, California - USA 91761 - 2816
Ph: 909-472-4100 | Fax: 909-472-4243
<http://www.iapmortl.org>

Report Number: 2536-18001-002 Project No.: 29225
 Report Issued: February 26, 2018.
 Client: Aqua-Rex
 3301 Spring Mountain Road Ste 18
 Las Vegas, NV 89102 Contact: Jonny Seccoabe
 Source of Samples: The samples were shipped to IAPMO R&T Lab from Aqua-Rex, and received in good condition on October 11, 2017.
 Date of Testing: October 25, 2017 through December 15, 2017.
 Sample Description: Scale Prevention Device; model: Aqua-Rex WK1-E.
 Scope of Testing: The purpose of the testing is to determine the efficacy of the Scale Prevention Device per section 5 of IAPMO IGC 335-2018, entitled "Rapid Scaling Test for Scale Prevention Devices".

CONCLUSION: **When tested per Section 5 of IAPMO IGC 335-2018, Aqua-Rex WK1-E reduced scaling by 83% when applied to Las Vegas water tested to 180°F.**

Tested by,

Reviewed by,

Hank Ninh
Hanks Ninh, Project Engineer

Sean Vuu
Sean Vuu, P.E., Manager, Specialty Projects

Pump Water. Not Oil.

ELV-Series Sump Pumps with OilTector® Control
Environmentally-friendly pump systems for elevator sumps, transformer vaults and areas where the discharge of oil into the environment is prohibited

Liberty Pumps®

A Family and Employee Owned Company

Represented Locally By:

WWIP Corporation

WWIPcorp.com



OilTector®

Arlington

600 112th Street - Suite A
Arlington, TX 76011
P: 214-920-8420

Houston

2516 E. Crosstimbers
Houston, TX 77093
P: 713-699-5778

Only One Tankless Is
Built to be the Best®



INFINITI® GS & GR TANKLESS GAS WATER HEATERS

- Robust stainless steel heat exchanger for longer life
- Residential and commercial applications
- Cascade and common venting between standard and recirculation models



713-674-8735

www.pmi reps.com

©2024, Bradford White Corporation. All rights reserved



MECHLER-BLASS ASSOCIATES



DILLARD ASSOCIATES

American Standard

LIXIL

Andy Chantos

Leader: Architect and Design, Engineer,
 Multi-family, Hospitality

American Standard Brands

Andy.Chantos@lixil.com

www.americanstandard.com |

www.dxv.com | www.grohe.com/us

LIXIL Link to Good Living

Mobile: 732-514-2908



Tiny valve-clogging bits of
 debris, meet your match.


Introducing Ultima



Failed flush valves waste time, money and water. The Ultima Diaphragm Flush Valve features a self-cleaning wiper spring that clears the refill orifice with every flush, preventing clogs and run-on before they start. It's the very tiny big idea you've been waiting for. After 150 years, American Standard knows what you need in reliable bathroom performance.



MediTrac[®]
Flexible Medical Gas Piping by OmegaFlex[®]



Up to 5x faster installation. 100% more time for patient care.

Rarely does a product come along that lowers costs and risks while adding more time for patient care. MediTrac[®] rolls out these benefits and more with patented, bendable, long-length corrugated copper alloy medical tubing. Up to 70% fewer fittings. Up to 80% less hot work. Up to 5 times faster installation and up to 55% less cost* without closing sections of your facility. Now that's ingenuity on a roll.

* Typical installations reveal total cost savings of 55% or more.



OmegaFlex[®]
1.800.355.1039 | MediTrac.US

MediTrac fully complies
with NFPA 99-2018

MTUS-530 REV 06/19

© OmegaFlex 2019