

Central Texas Circulator

CHAPTER OFFICERS:

President:

Greg Rodriguez ASSE 6060
361.207.3424

Vice President Technical

Zed Hernandez
713.425.9888

Vice President Membership:

Christopher A. Phillips, CPD,
GPD 210.262.2142

Vice president Legislative:

Francisco DeHoyos FASPE
773.732.1150

Treasurer:

Andy Chantos

AYP Liaison:

Jacob Prado CPD
210-664-0728

WOA Liaison:

Hayley Divlbliss

Affiliate Liaison

Stephen Schneider, CPD

Chapter Affiliate Liaison:

Christopher A. Phillips,
CPD,GPD, 210.262.2142

Website / Social Media

Zed Hernandez
713.425.9888

Secretary

Tyler Johnson



Presidents Message



Dear ASPE Central Texas Members,

As President of our esteemed organization, I would like to take this opportunity to extend my heartfelt gratitude to all the remarkable women who contribute their time, expertise, and passion to ASPE. Your dedication and commitment are invaluable to our success, and we are truly grateful for your presence.

In honor of Women's History Month, let us come together to celebrate the achievements, resilience, and contributions of women throughout history and within our organization. Your leadership, innovation, and strength inspire us all, and we are privileged to have you as part of our ASPE family.

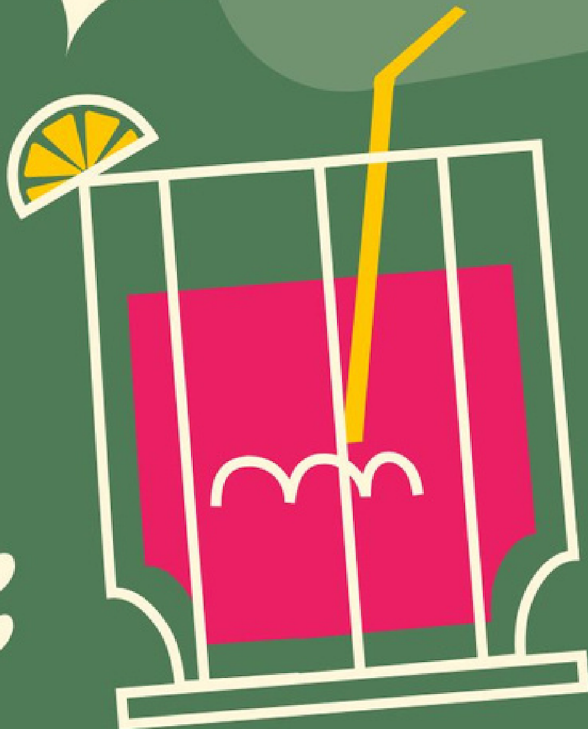
Thank you for your unwavering support and commitment to excellence. Here's to the incredible women of ASPE and the indelible mark you continue to make on our profession and our world.

Best regards,
Greg Rodriguez

WOMEN OF ASPE



MANI/PEDI HAPPY HOUR



03/27/24

6:00PM - 7:30PM

FANTASIA NAIL BAR

5822 Worth Pkwy
Suite 116
San Antonio, TX 78257

LET'S CELEBRATE WOMEN'S HISTORY
MONTH WITH DRINKS, NAILS AND WOMEN
IN OUR INDUSTRY



Title: Exciting Lineup Ahead for Central Texas ASPE Chapter Meetings!

Hey ASPE enthusiasts,

I am delighted to share some exciting news with you all!

We have successfully secured a date for our highly anticipated second annual ASPE Central Texas Technical Seminar. This year, our event will be held in the vibrant city of Austin, Texas, on November 14th.

Please take a moment to mark your calendars for this significant event. Our technical seminar promises to be an enlightening experience, filled with valuable insights, networking opportunities, and the latest developments in our industry.

Your feedback from last year's seminar is invaluable to us. We strive to continuously improve and tailor our offerings to meet the needs of our Central Texas members. Therefore, if you have any feedback or suggestions from the previous seminar, please do not hesitate to share them with us.

We are committed to providing a seminar that directly benefits you, our members. As such, we invite you to let us know what specific topics or areas you would like to see covered in this year's classes. Your input will guide us in crafting a program that addresses your interests and concerns.

Thank you for your ongoing support and participation in ASPE Central Texas events. We look forward to collaborating with you to make this year's technical seminar a resounding success.

Warm regards,

Zed Hernandez
Vice President Technical
ASPE Central Texas Chapter

Register today!



CENTRAL TEXAS

APRIL ASPE TECHNICAL MEETING

In this one-hour course, we explore how vacuum plumbing can help design professionals create projects that save water, energy, and money and contribute to sustainable design. We review how vacuum plumbing can help contribute to LEED projects and prevent the spread of infectious diseases, especially during a pandemic. Our team illustrates the differences between vacuum plumbing and gravity plumbing and how they compare regarding sustainability, health and safety, cost and design and use of existing real estate flexibility. Finally, we examine case studies that include healthcare facilities, commercial projects, and prisons.



SPEAKER

Ron Mims

National Sales
Manager



9th April, 2024
11:30am – 1:00pm



Pappadeaux
76 NE Interstate 410 Loop, San
Antonio, TX 78216



10th April, 2024
11:30am – 1:00pm



Lupe Tortillas
10515 N Mopac Expy Bldg R,
Austin, TX 78759

register at
www.centraltexasaspe.org



Greg Rodriguez ASSE 6060
AYP AUSTIN



Jacob Prado CPD
AYP SAN ANTONIO

Dear ASPE Young Professionals,

We extend our sincere apologies for the confusion surrounding the recent Putt Putt venue mix-up. Despite unforeseen circumstances leading to the closure of the initially planned venue, we are thrilled to announce that we successfully pivoted to the Cosmic Glow in the Dark Putt Putt. We appreciate your understanding and flexibility in adapting to the change. Rest assured, our commitment to providing engaging and enjoyable events remains unwavering.

Looking ahead, we are excited to announce our next event - a bowling extravaganza! Calling all bowlers, enthusiasts, and novices alike - this event promises to be a strike! Stay tuned for more details on date, time, and location.

Highlighting Young Professionals

In our ongoing efforts to recognize and celebrate the talent within our community, we are pleased to announce that we will be featuring a young professional in next month's news article. Whether it's yourself or a coworker who exemplifies dedication, innovation, and excellence in the field of plumbing engineering, we encourage you to nominate them for this special spotlight.

Please send your nominations to Jacob E. Prado at Jacob.e.Prado@imegcorp.com. Let's shine a spotlight on the rising stars among us and inspire future generations of plumbing engineers.

Thank you for your continued support and participation in ASPE events. Together, we continue to advance the field of plumbing engineering and foster a vibrant community of professionals.

Warm regards,

Jacob E Prado CPD
Mechanical Project Designer 1



2024 CPD Exam Dates: April 15–26

The CPD Exam

To be eligible to take the CPD Examination, a candidate must possess:

Full ASPE membership or previously received approval to sit for the exam starting November 22, 2021; or

A minimum of four years of experience in a position of responsibility for the design of plumbing systems and possess a baccalaureate degree in a field related to engineering; or

In lieu of an accredited degree, a candidate may substitute up to an additional four years of practical experience in the design of plumbing systems, for a total of eight years, or be granted a credit of one-half year of practical experience for each full year of education in an accredited curriculum related to plumbing engineering.

CPDT Certification counts towards 1 year of experience.

Here's more about the CPD Examination:

General [exam FAQs](#)

Exam [open book policy](#) FAQs

[2023 CPD Bulletin](#)

The exam is [remote proctored](#).

CPD [eligibility form](#)

The 2024 CPD Exam fees are:

ASPE Members \$450

Nonmembers \$675



CERTIFIED IN PLUMBING DESIGNSM

CERTIFIED IN PLUMBING DESIGN (CPD), administered by the American Society of Plumbing Engineers (ASPE), is the only international certification program specifically for engineers and designers of plumbing systems. Professionals who have the CPD credential are considered to have the highest level of skills in the design and specification of plumbing systems.

EARNING & MAINTAINING THE CPD CREDENTIAL

Am I eligible?

Route 1:

4 year engineering degree + 4 years of work experience designing plumbing systems

Route 2:

8 years of work experience designing plumbing systems

Other eligibility options:


Current CPDT certification counts toward 1 year of experience


PE license counts toward 2 years of experience



Women of ASPE®



Hayley DeVilbiss

WOA Liaison CT Chapter

As we celebrate Womens History Month, I wanted to take you on a journey through the remarkable history of Women of ASPE. From the early days when our presence in the industry was limited, to the strides we have made in breaking barriers and shattering glass ceilings, our story is one of resilience, determination, and triumph.

It is essential to acknowledge the pioneering women who paved the way for us, defying societal norms and carving out spaces for themselves in a male-dominated field. Their courage and tenacity laid the foundation upon which we stand today.

Throughout the years, Women of ASPE have played integral roles in driving innovation, fostering collaboration, and advocating for diversity and inclusion within our organization and beyond. We have demonstrated time and again that gender is not a limitation but a source of strength, bringing unique perspectives and insights to the table.

As we celebrate our past achievements, let us also look to the future with optimism and determination. Let us continue to support and uplift one another, to mentor the next generation of female leaders, and to push boundaries until equality and equity are no longer aspirations but realities.

Together, we are rewriting the narrative of women in the plumbing engineering profession. Our journey is far from over, but with each step forward, we inch closer to a future where every woman's potential is recognized, celebrated, and fully realized.

Thank you for being part of this journey. Let us continue to write history together, one breakthrough at a time.

Thank you,

Hayley



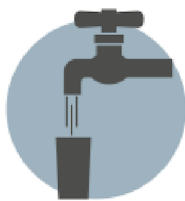
WHAT IS A Plumbing Engineer?

PLUMBING ENGINEERS are a vital part of design/build construction teams for residential, commercial, and industrial facilities. They interact with other construction trades to provide building owners with efficient, functional, and sustainable plumbing systems that protect the health, welfare, and safety of the public and prevent environmental contamination.

WHAT DO PLUMBING ENGINEERS DO?

PLUMBING ENGINEERS use the principles of fluid flow along with engineering calculations to design plumbing systems that transport fluids and gases throughout buildings. Those systems include:

$$S = \frac{\text{rpm}\sqrt{Q}}{\text{NPSH}^{0.75}}$$
$$\times 2.31 - h_f, L_H + \frac{(P_B - V_P)}{\text{Specific gravity}}$$



Domestic water systems



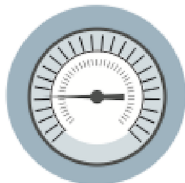
Wastewater



Fuel gas



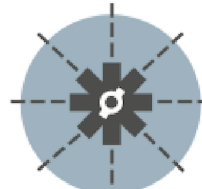
Medical gas & vacuum



Compressed air



High-purity water



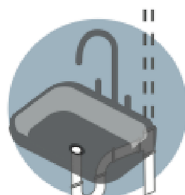
Fire suppression



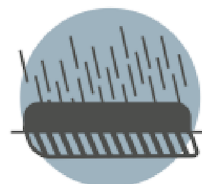
Chemical waste



Rain & stormwater systems



Venting



Site & building drainage



Water efficiency

WHAT DOES THE PROFESSION ENTAIL?

"The old adage that 'anyone can do plumbing' does not hold water anymore. A diversified and accomplished plumbing engineer is a valuable commodity in the design/build market."



PLUMBING ENGINEERS are highly skilled individuals involved in many different aspects of the design/build process, including:

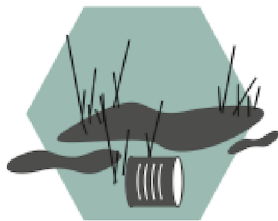
PLUMBING SYSTEM DESIGN	COMMISSIONING
PROJECT MANAGEMENT	CODE & STANDARD EXPERTISE
CONSTRUCTION ADMINISTRATION	FORENSIC & SUBSURFACE SYSTEM EVALUATION
BUILDING INFORMATION MODELING (REVIT)	COST ESTIMATION
PRODUCT & SYSTEM SPECIFICATION	PROBLEM SOLVING

PROTECTING PEOPLE & THE ENVIRONMENT

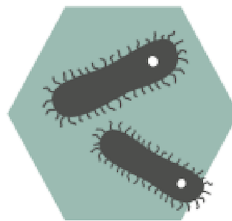
PLUMBING ENGINEERS help eliminate many of the threats that sicken people and harm the environment on a global scale by:



Delivering safe drinking water & sanitation systems



Combating groundwater contamination & depletion

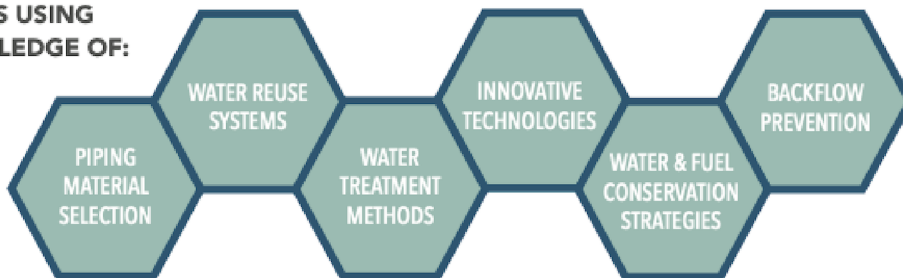


Preventing waterborne diseases



“Through their designs, plumbing engineers affect every life.”

THEY DO THIS USING THEIR KNOWLEDGE OF:



HOW TO LEARN MORE

The American Society of Plumbing Engineers (ASPE) is the only association dedicated to promoting the plumbing engineering profession and helping plumbing engineers advance in their careers. Our members have a wealth of knowledge and experience and are ready to help others learn more about the industry.



To discover ASPE and find local contacts, visit:

[aspe.org](https://www.aspe.org)



Connect with Us



March Meeting



BATTERY REQUIREMENTS

Catching up with the energy industry



In most vehicle shops, either professional or as part of a high school shop, there is a place where batteries are stored and/or recharged. The most common way to store batteries is by stacking them in vertical racks. The location for these racks has a few requirements to meet from different codes: NFPA, OSHA, Electrical, HVAC, and Plumbing; as well as the Electrical Safety Foundation International (ESFI).



When batteries are stored, they have the possibility of leaking, releasing toxic fumes, setting themselves on fire and even exploding in situations where its storage room with poor ventilation or in a location that is exposed to high temperatures.



To comply with the most common risk “Battery leakage” the Plumbing code requires that a dedicated Acid-resistant floor drain is provided for the storage area which will be discharging into an acid neutralizer before connecting to the building waste system; therefore, piping and joining methods for drainage and vent systems have to be corrosion resistant to the Battery acids and the chemicals that might be used to put out a fire in case one or more battery cells get ignited.

These drainage requirements are covered by the IPC and UPC codes under “Special Wastes”.

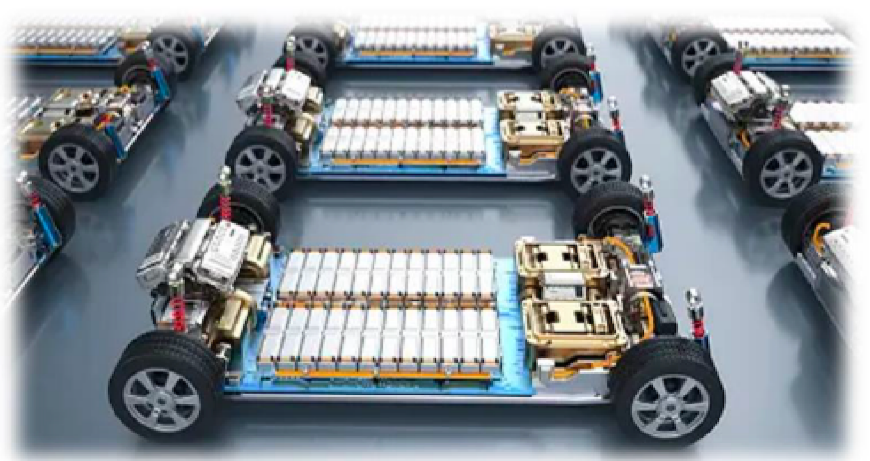
Nowadays Batteries have expanded their range of applications, they are no longer limited to automobile and minor voltage equipment. Its use has become a necessity for the modern robotic industry. Its usage varies tremendously, from medical equipment to warehouse distribution and storage logistics.



The industry in general has set a goal of reducing CO2 emissions by avoiding the use of combustion as a source of energy, instead, they are switching to environmentally friendly energy sources. Because of this trend, the use of batteries is increasing exponentially, and now all the **Autonomous equipment** fully depends on **portable energy**. This creates a need for most type of buildings to have storage for back up batteries. Even some equipment has a dedicated emergency battery energy generator.



The automotive industry is going through its own energy evolution. This change is compatible with the change that the auto industry experienced when the vehicles went from steam propulsion to gasoline...





The Ugly side

Despite the advances in energy technology, our current solutions for fire protection are not ready for fires created by defective batteries or recharging stations. Mainly due to wrong use or malfunction car batteries will ignite setting themselves on fire. The problem is that if one battery starts burning, the rest of them will catch fire as well.

Currently, firefighters are not

equipped to put out this type of chemical fires that easily; because even when it looks like the fire is finally controlled, another battery soon starts burning to create a very dangerous situation for first responders; therefore, in most situations they let the vehicle to be totally consumed by the fire until it puts itself out.

The acquisition of electric vehicles and the use of e-bikes and e-scooters as a means of alternative transportation for work and recreational activities and not fully following the manufacturer's instructions pose a major fire risk while charging or storing. This issue has created a well-founded fear that a fire caused by a vehicle battery may extend to the neighbor vehicles or properties.



To avoid extensive losses, HOA's (Home Owners Association) are starting to request that these Electric vehicles and charging stations be located outside of the building even if the parking area/space is prepared with a fire protection system.

Back to Basics



In conclusion, where Batteries are stored or get recharged due to the possibility of a corrosive leakage, a drainage neutralizing solution is required; in addition to that the risk of an explosion will require the provisions for an emergency shower/eye/face wash.

Per NFPA provisions to control an electrical fire shall be provided.

ESFI is providing free safety information and resources to help reduce the risk of injury and damage to property when storing and charging lithium-ion batteries.

Resources for electric vehicle owners:

- [Understanding Electric Vehicles tip sheet](#)
- [Electric Vehicles: Charging Options and Safety tip sheet](#)

Resources for e-bike and e-scooter owners:

- [E-Bike and E-Scooter tip sheet](#)
- [Lithium-Ion Battery Safety tip sheet](#)
- [Safety with E-Bikes and E-Scooters webpage](#)

References:

IFC, NFPA ESFI, IPC & UPC

Pictures: by: Kumpan Electric, Oxana Melis, & Andreas Rasmussen on Unsplash.com

Chesky_W, Sergeyryzhov, Vanit Janthra, Coffeekai, Zigmunds Dizgalvis, vkyryl, simonkr & PhonlamaiPhoto on iStockphoto.com

J. Francisco DeHoyos, CPD, FASPE.
Plumbing Technical Manager.



jfdehoyos@gmail.com



ASPE Central Texas Chapter, VPL.
ASPE Houston Chapter, Education Chairman.
ASPE Society Legislative Committee, Member.
ASPE Society Education Committee, Member.
ASPE Society Long Range Committee, Member.



Making the Most of Your Membership

MEMBER BENEFIT TIP #1 - BUILD A KILLER NETWORK

One of ASPE's greatest benefits is its members. Everyone is busy at home and at work, but members who attend Chapter meetings, [Conventions & Expositions, and Symposiums](#) are more likely to build a killer contact list. Our members are eager to help you in your next plumbing engineering problem, which undoubtedly will make you more competitive in the workforce.

Whether you are in sales or engineering, you sell yourself every day. ASPE has many networking opportunities for you to meet professionals who possess the skills and training necessary to help you out of a tight spot or put you in touch with someone who can help you. If you are outside your comfort zone, ask your Chapter Board to make the introductions. Exchange business cards and remember to follow up with a brief conversation or email thanking them for their time. Before you know it, you will be a pro in engaging other members, which will lead to career growth and prosperity. If you are not able to attend a Chapter meeting, [ASPE Connect](#) offers you a way to build your network online.

MEMBER BENEFIT TIP #2 - ASK A MEMBER FOR HELP

Being a member in ASPE enables you to call upon a friend for help. Your Chapter Officers know who does what. Call your [Chapter leaders](#) when you are stumped on the job and ask for help. More times than not, you will find a fellow member who is more than willing and able to assist you with your problem. If they can't help, kick it up to the [Region Director](#), and they will find you the help you need. ASPE members treat other members just like family; it's our single most valuable membership benefit.

MEMBER BENEFIT TIP #3 - BOOST YOUR INDUSTRY VISIBILITY

Demonstrate your abilities to lead and boost your industry visibility by volunteering to join your Chapter Board of Directors or apply to join the [Society Board of Directors](#). Employers, clients, and coworkers respect and look up to ASPE Chapter and Society Officers. Without our leaders, we would not have a Society; it's worth the work.

MEMBER BENEFIT TIP #4 - EXPAND YOUR KNOWLEDGE AND EARN CEUs

ASPE produces webinars for members to expand their knowledge of plumbing systems and design. Members pay about half the price as nonmembers and if the webinar is sponsored, members can participate for free, so this is a great member benefit. Hover over Education & Credentialing in the [aspe.org](#) main menu, and then click on [Webinars and Workshops](#). You can access current webinars as well as every webinar ASPE has ever held. Don't forget to recommend these to your colleagues and clients.

Through our special Read, Learn, Earn series, ASPE also can help you accumulate the CEUs required for maintaining your CPD or CPDT credential or other regulatory agency CEU programs for your Professional Engineer license. Here is how you do it. Go to [aspe.org](#), hover over Education & Credentialing, and in the left column you will see [Read, Learn, Earn](#). Click on it and it will take you to a page with the active materials. This benefit is free to members and \$35 for nonmembers. Download one of the articles, read, learn, and earn your CEUs. When you complete the payment screen, the system guides you through the questions and you can enter your answers directly into the system. (Note that members do NOT need to add a credit card.) Voila! If you get 90% correct, you will receive your 0.1 CEU in the email specified in your account.

MEMBER BENEFIT TIP #5 - TRACK YOUR CEUs

We've seen some extraordinary new things come out of ASPE in the past couple of years, but this benefit is as good as it gets. Did you know that you can track your CEUs in your member area on [aspe.org](#)? Well you can, and here is how:

1. Under Education & Credentialing in the [aspe.org](#) main menu, in the left column click on [Continuing Education](#). You have now entered the ASPE Education website.
2. In the menu click on [My Education](#). (You must be signed in to see My Education.) This takes you to your dashboard.
3. Under My Dashboard, click on Transcript/Achievements.

All of your ASPE-sponsored CEUs will already be populated in this table, but you can also add other CEUs from other sources. Simply click on the link toward the top of the table and the site will direct you to a page to add the session information and to upload a certificate.

This member benefit is invaluable in keeping your CEUs current, and it's only offered to members. Don't get caught empty-handed when the eventual audit for your credential comes around.

MEMBER BENEFIT TIP #6 - MEET POTENTIAL CLIENTS/MEMBERS

If you are an Affiliate member, in sales, who steps up and takes on a membership role, you are in a unique position to promote ASPE and your company. Your leadership role is a valuable way to place yourself in front of prospective clients and members. Talk to your Chapter Board of Directors and see what you can do to promote yourself and ASPE.

MEMBER BENEFIT TIP #7 - LEARN HOW TO MENTOR OTHERS

ASPE has mentor opportunities so you can help foster the career of another member. Opportunities are available for all members. Just click on [Mentoring Program](#) under Membership & Global Community on [aspe.org](#) for more information. Leave your mark on our Society.

MEMBER BENEFIT TIP #8 - ADD LETTERS TO YOUR NAME

We all market ourselves every day with everything we do, and ASPE can help with programs that can add letters to your name: our [Certified in Plumbing Design \(CPD\)](#), [Certified Plumbing Design Technician \(CPDT\)](#), and [Green Plumbing Design \(GPD\)](#) programs. These programs will help others instantly recognize your leadership and expertise in the plumbing design industry.

MEMBER BENEFIT TIP #9 - ACCESS YOUR ASPE ACCOUNT

Accessing your ASPE account has never been easier. Visit [aspe.org](#) and click on the [LOGIN](#) tab in the upper right-hand corner. If you know your username or email address and your password, enter them and you will be done. If you do not know your username and password but know your email address, click on the "Request a New Password" tab. A temporary password will be sent, but be sure to change it when you log in. If you do not know your username, you can try your last name followed by your member number, just the digits. For example: jones12345.

Having trouble logging in to your ASPE account or you can't remember your member number? No worries. Your Chapter Vice President, Membership has a roster with this information. Call or email them and they will be happy to help you access your account.

MEMBER BENEFIT TIP #10 - MEMBERSHIP RENEWAL

ASPE has made it easier than ever to renew your membership. Log in to [aspe.org](#) as you ordinarily do and then to the left of the login button is a green "[Join/Renew](#)" button. Just click and you'll be renewed in no time. **NOTE: If you have lapsed for more than 90 days, your account was purged from the membership database and you will need to reapply for membership.**

MEMBER BENEFIT TIP #11 - SPECIAL-INTEREST GROUPS

[ASPE Young Professionals \(AYP\)](#) is designed for young industry professionals looking to meet with peers to share experiences, exchange ideas about the plumbing design industry, and network with other Chapter members. The focus of AYP is to help young plumbing engineers, design professionals, and practitioners establish contacts and further the mission of the Society. ASPE members 35 years old and younger are all included in this special-interest group.

The core mission of the [Women of ASPE \(WOA\)](#) is to engage, retain, and advance women in the plumbing design industry, through education, leadership development, and networking opportunities. WOA is committed to bringing together women and assisting them to achieve their professional and personal goals.

MEMBER BENEFIT TIP #12 - ASPE TABLES

The [ASPE Plumbing Engineering & Design Handbook of Tables](#) is a tool to help members with pipe sizing, equations, and more. This information is available not only as a book, but it is also available in both the Apple App Store and in the Google Play Store, offering members a portable way to access these valuable tables from their phones. More recently, the tables have become available for download to your Mac or PC. Just visit the [ASPE Bookstore](#) and you can have these tables at your fingertips.

MEMBER BENEFIT TIP #13 - CAREER CENTER

ASPE's Career Center is a valuable tool for ASPE members seeking new jobs or those looking for experienced plumbing engineers to join their team. Just hover over Membership & Global Community in the [aspe.org main menu](#) and click on [Career Center](#) to get started.

What is ASPE?

The **AMERICAN SOCIETY OF PLUMBING ENGINEERS** (ASPE) is the only organization dedicated to promoting the plumbing engineering profession to both enhance career opportunities for our members and ensure the health, safety, and well-being of the public through the design of safe plumbing, drinking water, and sanitation systems.

WHAT WE DO



Provide continuing professional education programs



Publish design manuals, tools, and standards



Host conferences, tradeshow, and networking events



Certify professionals skilled in plumbing system design



Promote safe and sustainable water and sanitation systems



Represent the industry in local and national government



Help develop safe plumbing and building codes and standards



OUR MEMBERS

Our members are individuals working in various professions related to plumbing system design.

← What Is Plumbing Engineering?

Plumbing engineering is a vital part of the design/build construction process. Plumbing engineers use the principles of fluid flow with engineering calculations to design plumbing systems that transport fluids such as water, wastewater, natural gas, and rainwater throughout buildings.



HOSPITALITY



BARRIER-FREE

The Most Specified Brand in the Industry



FIAT
PRODUCTS

RESIDENTIAL



COMMERCIAL

Visit our website at
www.FIATPRODUCTS.com



Curtis Dady
(346) 287-6939
CurtisD@PMIreps.com

YOUR DRAINAGE SOLUTION FOR AUSTIN PARKING GARAGES

INLET GRATE BOX



CB-125 G

SHIPS IN
7 DAYS.

SAND/OIL INTERCEPTOR



OT-500

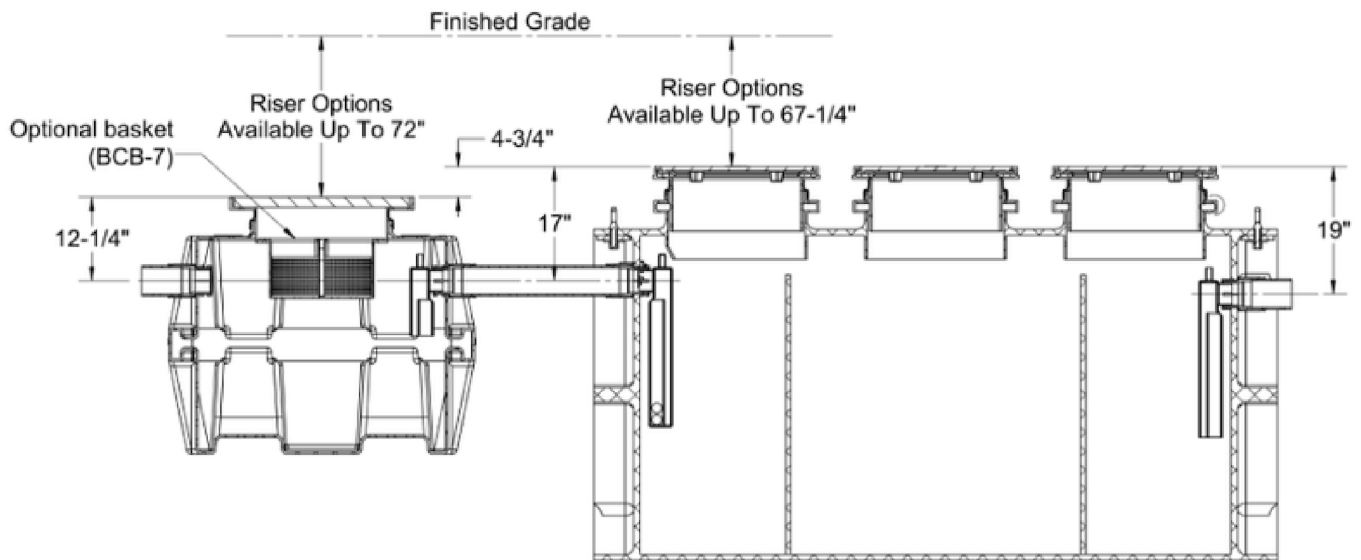


Austin Water requires an inlet grate box to be upstream from a 500 gal. sand/oil interceptor*



CB-125-G

OT-500



*Sand/oil interceptor size requirement is 250 gal. for five or fewer drains, and 500 gal. for six or more drains.



STRIEMCO.COM
913-222-1500



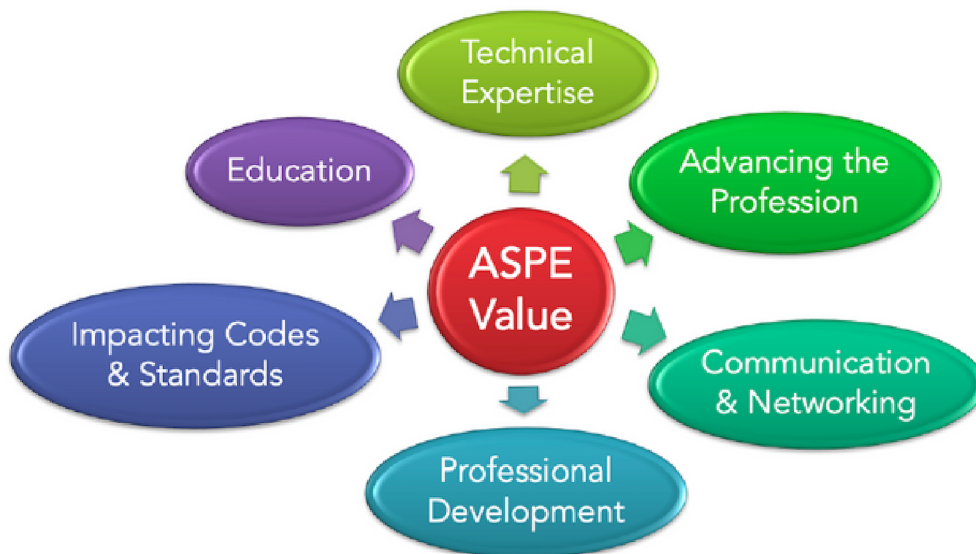


Connect with us
on Social Media!



ASPE Purpose

The core purpose of the American Society of Plumbing Engineers is to continually enhance and promote the profession of plumbing engineering design while assisting in improving the health, welfare, and safety of the public on a global scale.



CPDT CERTIFIED PLUMBING DESIGN TECHNICIAN®

HOW THE CPDT CREDENTIAL CAN ACCELERATE YOUR CAREER IN PLUMBING ENGINEERING

Due to its niche nature, plumbing engineering offers a long, stable, and profitable career, but breaking into the profession can be challenging if employers aren't aware of your unique skills. That's where the Certified Plumbing Design Technician (CPDT) credential can help. As the only credential

specific to plumbing system designers early in their careers, the CPDT provides immediate recognition of individuals skilled in this trade. That's why Ashley Turlington, CPDT, recommends earning the designation. "Companies seek candidates with credentials

pertinent to their field," she says. "The CPDT can open up a lot of professional opportunities."

DEMONSTRATE YOUR TECHNICAL KNOWLEDGE

Administered by the American Society of Plumbing Engineers (ASPE), the CPDT program provides a standard of professional competence in the practice of plumbing design at the technician level. Employers are assured that designers who have earned the CPDT credential have the requisite knowledge and skills to excel in their company. This is one of the primary reasons individuals pursue the designation. "I earned my CPDT credential to demonstrate my technical knowledge of plumbing, and it has given me better recognition as a well-rounded plumbing designer," says John Lansing, CPDT, LEED Green Associate.

VALIDATION OF YOUR ACCOMPLISHMENTS

Through its rigorous processes, the CPDT program identifies professionals who have demonstrated their expertise and abilities in the field of plumbing design. The certification exam tests an individual's proficiency in skills that employers desire, such as laying out systems, sizing calculations, selecting equipment, and preparing documentation. The test specifications and content reflect the abilities essential to performing at the technician level of a plumbing designer.

The CPDT credential gives you "more respect, validation of your accomplishments, and [subsequently] more compensation," says Justin Wroblewski, CPDT.

IMPROVE YOUR VALUE TO YOUR COMPANY

The CPDT program's recertification requirement means that CPDTs must stay current on new techniques and technologies through continuing education, which is a desirable trait to employers who are looking for an edge in the competitive MEP market. Having CPDTs on their staff showcases a firm's expertise and their commitment to maintaining the highest, most up-to-date design standards.

"My CPDT credential has allowed my company to get better jobs because clients view us as more knowledgeable," Turlington says.

And the benefit is mutual. "Taking the step to improve your value to your company will also benefit your career," says Wroblewski.

HOW TO ACCELERATE YOUR CAREER

The CPDT program is designed for plumbing system designers with less than eight years of professional experience, and the exam is held annually at online testing sites around the world. If you are planning on achieving ASPE's internationally renowned Certified in Plumbing Design (CPD) credential, the CPDT is an excellent starting point.



To learn more and start accelerating your career, visit www.aspe.org/education-credentialing/cpdt/cpdtexam

MEET THE GREAT BASIN™ FAMILY



San Antonio and Austin Approved!

Contact Zed Hernandez at 713.425.9888 or zed@championsmarketing.net to help you size your next project.



▲ Our new GB-1000 being installed at Costco in Independence, Missouri



REPRESENTED BY



Size your project with Grease Monkey.
GreaseMonkeySizing.com

LIFETIME GUARANTEED GREASE INTERCEPTORS

HAPPY
BIRTHDAY

March

Hayley DeVilbiss

Reagan Farish

Wendy Junod

Jacob Lopez

Daniel Loy

Mark Mattern

Jose Perez

Jordan Pina

William Rodriguez

Chuck Schwabe

William Standley

Mark Tench

ASPE Mentoring Program

This program, which is available to all members of the Society, has been designed to connect ASPE members who have a particular skill set (mentor) with individuals (mentee) who are searching to acquire the same skills to develop and make progress toward their personal and professional goals.

Who Is a Mentor?

A mentor is someone who can help the mentee develop skills for success and long-range career planning, is able to be a good listener, is willing to share experiences and views, is willing to commit time and effort, provides an “open door” to questions and problems, points out both strengths and opportunities for improvement, and has a vested interest in the growth and development of their mentee.

Benefits to the mentor:

- Satisfaction in helping someone mature, progress, and achieve goals
- Meeting and sharing experiences with other mentors
- Personal ongoing support to help the mentee succeed
- Personal fulfillment through contribution to the Society and the individual

Who Is a Mentee?

Having a mentor can contribute to a successful and satisfying career. Without a mentor, that learning occurs mostly through trial and error. With a mentor, even experienced professionals can benefit from the experiences and expertise of someone who has withstood the trial and can help the mentee avoid the mistakes. Similarly, those new to the industry will discover that being a mentee shortens the learning curve for acquiring the skills and knowledge most critical to a fruitful career.

Benefits to the mentee:

- Discover new talents about yourself
- Career satisfaction
- Expand your personal network
- Maximize your strengths

connect.aspe.org



AT LAST - IT'S ARRIVED!



Just what you've been waiting for!

Independent third-party performance verification under a US test protocol for a Physical Water Conditioner - the alternative to the conventional water softener.

- **AT LOW COST**
(You can't afford not to treat hard water anymore)
- **ZERO PLANT ROOM FOOTPRINT**
(Attaches to the wall or to pipe work)
- **ZERO SERVICING**
(No Salt)
- **ZERO MAINTENANCE**
(Which means it is 100% reliable)
- **WARRANTED FOR 20 YEARS**



Case Study: Panorama Towers, Las Vegas, NV.

Cost to install: **\$55,000** ✓
 Savings over conventional softener in year one: **\$168,000** ✓
 Estimated 3-year savings: **\$500,000** ✓
 Annual Running Costs: **\$200**

Download the Engineer's Specifier Guide from www.aqua-rex.com

Scale Down. Soften Up.



TEST REPORT

5001 E. Philadelphia Street
Ontario, California - USA 91761 - 2816
Ph: 909-472-4100 | Fax: 909-472-4243
<http://www.iapmort.org>

Report Number: 2536-18001-002 Project No.: 29225
 Report Issued: February 26, 2018.
 Client: Aqua-Rex
 3301 Spring Mountain Road Ste 18
 Las Vegas, NV 89102 Contact: Jonny Seccombe
 Source of Samples: The samples were shipped to IAPMO R&T Lab from Aqua-Rex, and received in good condition on October 11, 2017.
 Date of Testing: October 25, 2017 through December 15, 2017.
 Sample Description: Scale Prevention Device; model: Aqua-Rex WK1-E.
 Scope of Testing: The purpose of the testing is to determine the efficacy of the Scale Prevention Device per section 5 of IAPMO IGC 335-2018, entitled "Rapid Scaling Test for Scale Prevention Devices".

CONCLUSION: **When tested per Section 5 of IAPMO IGC 335-2018, Aqua-Rex WK1-E reduced scaling by 83% when applied to Las Vegas water heated to 180°F.**

Tested by,

Reviewed by,

Harry Ninh
Harry Ninh, Project Engineer

Sean Vu
Sean Vu, P.E., Manager, Specialty Projects



Pump Water. Not Oil.

ELV-Series Sump Pumps with OilTector® Control
Environmentally-friendly pump systems for elevator sumps, transformer vaults and areas where the discharge of oil into the environment is prohibited

Liberty Pumps®

A Family and Employee Owned Company

Represented Locally By:

WWIP Corporation

WWIPcorp.com



OilTector®

Arlington

600 112th Street - Suite A
Arlington, TX 76011
P: 214-920-8420

Houston

2516 E. Crosstimbers
Houston, TX 77093
P: 713-699-5778

BRADFORD WHITE
WATER HEATERS
Built to be the Best

MORE PROTECTION THAN EVER

Vitraglas® is an exclusive enamel tank lining that provides unsurpassed protection from the corrosive effects of water. Microban® antimicrobial technology provides additional product protection by helping to prevent the growth of bacteria, mold and mildew on the surface of the tank lining.

Bradford White Microban® specifications can be accessed in the following locations:

- BSD Speclink to get Microban® integrated into the platform.
- MasterSpec to get Microban® integrated into the platform.
- Specification section on the Bradford White website (scan the code to access).

VITRAGLAS
SUPERIOR PROTECTION SINCE 1951

+ **MICROBAN**



Curtis Dady
(346) 287-6939
CurtisD@PMIreps.com

Microban® antimicrobial product protection helps prevent the growth of bacteria, mold and mildew that may affect the product. The built-in antimicrobial properties do not protect users or others from disease-causing organisms. Microban® is a registered trademark of Microban Products Company. ©2022, Bradford White Corporation. All rights reserved.



MECHLER-BLASS ASSOCIATES



American Standard

LIXIL

Andy Chantos

Leader: Architect and Design, Engineer,
Multi-family, Hospitality

American Standard Brands

Andy.Chantos@lixil.com

www.americanstandard.com |

www.dxv.com | www.grohe.com/us

LIXIL Link to Good Living

Mobile: 732-514-2908

Tiny valve-clogging bits of
debris, meet your match.


Introducing **Ultima**



Failed flush valves waste time, money and water. The Ultima Diaphragm Flush Valve features a self-cleaning wiper spring that clears the refill orifice with every flush, preventing clogs and run-on before they start. It's the very tiny big idea you've been waiting for. After 150 years, American Standard knows what you need in reliable bathroom performance.



MediTrac[®]
Flexible Medical Gas Piping by OmegaFlex[®]



Up to 5x faster installation. 100% more time for patient care.

Rarely does a product come along that lowers costs and risks while adding more time for patient care. MediTrac[®] rolls out these benefits and more with patented, bendable, long-length corrugated copper alloy medical tubing. Up to 70% fewer fittings. Up to 80% less hot work. Up to 5 times faster installation and up to 55% less cost* without closing sections of your facility. Now that's ingenuity on a roll.

* Typical installations reveal total cost savings of 55% or more.



OmegaFlex[®]
1.800.355.1039 | MediTrac.US

MediTrac fully complies
with NFPA 99-2018

MTUS-530 REV 06/19

© OmegaFlex 2019