

Central Texas Circulator

CHAPTER OFFICERS:

President:

Greg Rodriguez ASSE 6060
361.207.3424

Vice President Technical

Zed Hernandez
713.425.9888

Vice President Membership:

Christopher A. Phillips, CPD,
GPD 210.262.2142

Vice president

Legislative:

Francisco DeHoyos FASPE
773.732.1150

Treasurer:

Andy Chantos

AYP Liaison:

Jacob Prado CPD
210-664-0728

WOA Liaison:

Hayley DiVilbiss

Affiliate Liaison

Stephen Schneider, CPD

Chapter Affiliate Liason:

Christopher A. Phillips,
CPD,GPD, 210.262.2142

Website / Social Media

Zed Hernandez
713.425.9888

Secretary

Tyler Johnson



Presidents Message



Dear ASPE Central Texas Members,

In this month's newsletter, we're thrilled to highlight the latest achievements of our members, share industry insights, and announce upcoming opportunities for professional development and networking. From informative articles penned by experts to exclusive interviews with industry leaders, there's something for everyone in this edition.

We encourage you to dive in, explore, and engage with the content. Whether you're a seasoned professional or just starting your journey in the plumbing engineering field, ASPE Central Texas is here to support you every step of the way. Thank you for being an integral part of our vibrant community. Together, let's continue to inspire, learn, and grow as we navigate the exciting landscape of plumbing engineering.

Best regards,
Greg Rodriguez

Register today!



**Jonathan
Farr**

National Sales Manager
Epic Cleantec

**Topic: Water Conservation
Technologies**



14th May | 11:30
San Antonio | Pappadeaux

15th May | 11:30
Austin | Lupe Tortillas



AUP/WOA

TROLLEY PUB TOUR

May 16th 2024 530-730

517 Live Oak, San Antonio Texas 78202



**JACOB
PRADO CPD**



**HAYLEY
DEVILBISS**

AN EXPERANCE TO REMEMBER IN DOWN TOWN SAN ANTONIO

- Iconic Landmarks
- Historic Architectures
- Networking
- Unique Atmosphere

REGISTAR @

centraltexasaspe.org/meetinginfo.php

SPONSORED BY



Happy May! As we find ourselves nearly halfway through the year, it's an exciting time as we gear up for some insightful presentations in the coming months. However, July will offer a brief hiatus to embrace the summer season, with our monthly technical meetings set to resume in August. In the meantime, mark your calendars for next month's session featuring Mifab, delving into the world of trench drains. But first, let's kick off this month's gathering with Jonathan Farr from Epic Cleantec, who will enlighten us on innovative water conservation technologies. With anticipation high, let's come together to explore and learn. Here's to a fruitful exchange of ideas ahead—see you there, and let's strive for greatness!

As we navigate through the calendar year, the anticipation for knowledge-sharing and learning remains palpable. With each presentation, we delve deeper into various facets of our industry, broadening our understanding and expanding our horizons. While July offers a well-deserved break to soak in the summer vibes, August will see us reconvene with renewed vigor for our monthly technical meetings. But before we get to that, let's eagerly anticipate next month's discourse with Mifab, a session tailored to unravel the complexities of trench drains. For now, let's gather around Jonathan Farr as he guides us through the realm of water conservation technologies under the banner of Epic Cleantec. Together, let's harness the power of knowledge and innovation to propel us towards excellence. See you at the session—let's make it a memorable one!

Warm regards,

Zed Hernandez
Vice President Technical
ASPE Central Texas Chapter

ASPE



11TH ANNUAL ASPE CENTRAL TEXAS GOLF TOURNEY

2024 TEXAS TEE-OFF EDITION

Free Event for Engineers & Designers
(register online to grab your spot!)



TOURNAMENT HIGHLIGHTS:

- Full Tourney Completed in a Few Hours
- Eat & Drink While You Play
- Perfect for Beginners & Pros Alike
- Climate Controlled
- Cornhole Contest
- Raffle Prizes
- Round Robin Warm-Up with Sponsors
- Hole-In-One Contest (\$10k Prize)
- Free Gift for Participants
- Awards Reception

TUESDAY, JUNE 11TH
12PM - 4PM



EVENT CHAIRPERSON: CHRIS PHILLIPS (210) 262-2142



TOP GOLF





Greg Rodriguez ASSE 6060
AYP AUSTIN



Jacob Prado CPD
AYP SAN ANTONIO

Young Professional Spotlight: Ali Fouad

In our Young Professional Spotlight series, we highlight the journey and insights of rising stars in the plumbing design industry. Today, we shine a light on Ali Fouad, a 39-year-old mechanical engineer whose passion for learning and dedication to his craft have propelled him to success in the field of plumbing engineering.

I had the pleasure of meeting Ali during a manufacturer tour to Schier and Striem, where his expertise in plumbing design left a lasting impression on me. Beyond his impressive technical knowledge, Ali's affable nature and genuine passion for his work made him a standout colleague during our time together in Kansas City.



Ali's path to becoming a plumbing engineer is a testament to his resilience and commitment to excellence. Graduating from college in Iran, he embarked on a journey that led him to Louisiana State University (LSU) in Baton Rouge, where he earned his second Bachelor's degree after an additional 2 and a half years of study in the United States.

Currently employed at Sale O'Brien Engineering for the past two years, Ali's transition into plumbing design from a background in HVAC engineering speaks volumes about his adaptability and thirst for knowledge. When asked about his favorite aspect of the job, Ali enthusiastically shared that it's the opportunity to learn something new every day. His diverse portfolio includes projects ranging from shell buildings and office spaces to multi-purpose commercial buildings and restaurants.

Outside of his professional endeavors, Ali finds solace and enjoyment in gaming, particularly indulging in Call of Duty on the PlayStation5. However, his dedication to his craft extends beyond the office, as he actively engages with the American Society of Plumbing Engineers (ASPE) as a member of the Houston Chapter.

During our interview, Ali imparted valuable advice to aspiring designers and engineers venturing into the world of plumbing design. He emphasized the importance of joining ASPE chapters, attending seminars, and delving into ASPE handbooks to deepen one's understanding of the field. Additionally, Ali stressed the significance of building a robust network within the plumbing industry and never shying away from seeking guidance from seasoned professionals.

In conclusion, Ali Fouad's journey exemplifies the spirit of determination, continuous learning, and community engagement that defines the next generation of plumbing engineers. As he continues to make strides in his career, Ali serves as an inspiration to young professionals embarking on their own paths in the dynamic world of plumbing design.

Jacob E Prado CPD

ASPE Convention & EXPO'24

Columbus, OH October 18-23



You're Invited to the Largest Event for
Plumbing System Professionals

What You'll Find:

- + New plumbing technologies from more than 250 global exhibitors
- + Practical solutions to your plumbing design challenges directly from product engineers
- + A show floor filled with industry experts providing hands-on technical solutions
- + New skills from professional development and technical education sessions

250+ exhibitors **4,000+** professionals **25+** sessions

expo.aspe.org

REGISTER NOW!



Women of ASPE®



Hayley DeVilbiss

WOA Liaison CT Chapter

As we celebrate Womens History Month, I wanted to take you on a journey through the remarkable history of Women of ASPE. From the early days when our presence in the industry was limited, to the strides we have made in breaking barriers and shattering glass ceilings, our story is one of resilience, determination, and triumph.

It is essential to acknowledge the pioneering women who paved the way for us, defying societal norms and carving out spaces for themselves in a male-dominated field. Their courage and tenacity laid the foundation upon which we stand today.

Throughout the years, Women of ASPE have played integral roles in driving innovation, fostering collaboration, and advocating for diversity and inclusion within our organization and beyond. We have demonstrated time and again that gender is not a limitation but a source of strength, bringing unique perspectives and insights to the table.

As we celebrate our past achievements, let us also look to the future with optimism and determination. Let us continue to support and uplift one another, to mentor the next generation of female leaders, and to push boundaries until equality and equity are no longer aspirations but realities.

Together, we are rewriting the narrative of women in the plumbing engineering profession. Our journey is far from over, but with each step forward, we inch closer to a future where every woman's potential is recognized, celebrated, and fully realized.

Thank you for being part of this journey. Let us continue to write history together, one breakthrough at a time.

Thank you,

Hayley



What is ASPE?

The **AMERICAN SOCIETY OF PLUMBING ENGINEERS** (ASPE) is the only organization dedicated to promoting the plumbing engineering profession to both enhance career opportunities for our members and ensure the health, safety, and well-being of the public through the design of safe plumbing, drinking water, and sanitation systems.

WHAT WE DO



Provide continuing professional education programs



Publish design manuals, tools, and standards



Host conferences, tradeshow, and networking events



Certify professionals skilled in plumbing system design



Promote safe and sustainable water and sanitation systems



Represent the industry in local and national government



Help develop safe plumbing and building codes and standards



OUR MEMBERS

Our members are individuals working in various professions related to plumbing system design.

← What Is Plumbing Engineering?

Plumbing engineering is a vital part of the design/build construction process. Plumbing engineers use the principles of fluid flow with engineering calculations to design plumbing systems that transport fluids such as water, wastewater, natural gas, and rainwater throughout buildings.

Membership Standings

Region 5

Central Texas 147 members!

Chapter	Full	Associate	Affiliate	Total	PE	CPD	CPD + PE
Arkansas	26	5	21	52	11	2	0
Central Illinois	15	4	8	28	7	6	1
Central Texas	78	26	41	147	30	21	3
Chicago	143	31	112	294	51	61	21
Dallas/Ft. Worth	141	67	58	275	71	45	16
Houston	104	39	95	245	34	29	14
Kansas City	71	25	30	133	45	15	6
Lubbock High Plains	7	2	1	10	5	0	0
Minnesota	93	13	39	148	42	22	4
Oklahoma	38	5	27	71	19	4	0
Omaha	49	8	14	73	15	11	1
St. Louis	72	15	40	130	35	23	8
Wisconsin	87	32	44	167	34	12	3
Region 5 Total:	924	272	530	1773	399	251	77



WHAT IS A Plumbing Engineer?

PLUMBING ENGINEERS are a vital part of design/build construction teams for residential, commercial, and industrial facilities. They interact with other construction trades to provide building owners with efficient, functional, and sustainable plumbing systems that protect the health, welfare, and safety of the public and prevent environmental contamination.

WHAT DO PLUMBING ENGINEERS DO?

PLUMBING ENGINEERS use the principles of fluid flow along with engineering calculations to design plumbing systems that transport fluids and gases throughout buildings. Those systems include:

$$S = \frac{\text{rpm}\sqrt{Q}}{\text{NPSH}^{0.75}}$$
$$\times 2.31 - h_f, L_H + \frac{(P_B - V_P)}{\text{Specific gravity}}$$



Domestic water systems



Wastewater



Fuel gas



Medical gas & vacuum



Compressed air



High-purity water



Fire suppression



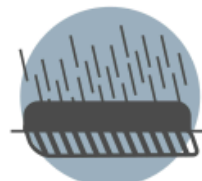
Chemical waste



Rain & stormwater systems



Venting



Site & building drainage



Water efficiency

WHAT DOES THE PROFESSION ENTAIL?

"The old adage that 'anyone can do plumbing' does not hold water anymore. A diversified and accomplished plumbing engineer is a valuable commodity in the design/build market."



PLUMBING ENGINEERS are highly skilled individuals involved in many different aspects of the design/build process, including:

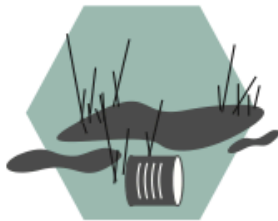
PLUMBING SYSTEM DESIGN	COMMISSIONING
PROJECT MANAGEMENT	CODE & STANDARD EXPERTISE
CONSTRUCTION ADMINISTRATION	FORENSIC & SUBSURFACE SYSTEM EVALUATION
BUILDING INFORMATION MODELING (REVIT)	COST ESTIMATION
PRODUCT & SYSTEM SPECIFICATION	PROBLEM SOLVING

PROTECTING PEOPLE & THE ENVIRONMENT

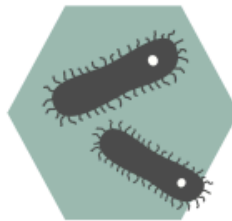
PLUMBING ENGINEERS help eliminate many of the threats that sicken people and harm the environment on a global scale by:



Delivering safe drinking water & sanitation systems



Combating groundwater contamination & depletion

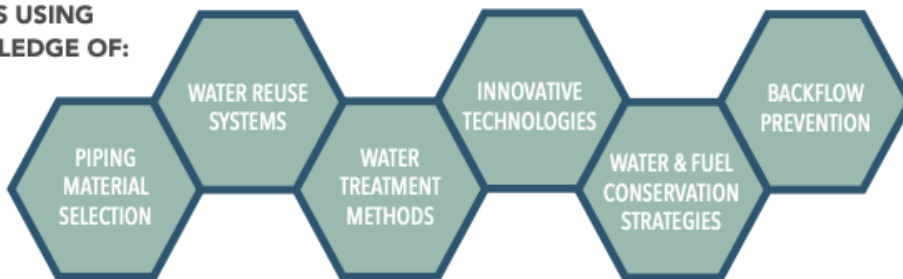


Preventing waterborne diseases



"Through their designs, plumbing engineers affect every life."

THEY DO THIS USING THEIR KNOWLEDGE OF:



HOW TO LEARN MORE

The American Society of Plumbing Engineers (ASPE) is the only association dedicated to promoting the plumbing engineering profession and helping plumbing engineers advance in their careers. Our members have a wealth of knowledge and experience and are ready to help others learn more about the industry.



To discover ASPE and find local contacts, visit:

aspe.org



Connect with Us



Making the Most of Your Membership

MEMBER BENEFIT TIP #1 - BUILD A KILLER NETWORK

One of ASPE's greatest benefits is its members. Everyone is busy at home and at work, but members who attend Chapter meetings, [Conventions & Expositions, and Symposiums](#) are more likely to build a killer contact list. Our members are eager to help you in your next plumbing engineering problem, which undoubtedly will make you more competitive in the workforce.

Whether you are in sales or engineering, you sell yourself every day. ASPE has many networking opportunities for you to meet professionals who possess the skills and training necessary to help you out of a tight spot or put you in touch with someone who can help you. If you are outside your comfort zone, ask your Chapter Board to make the introductions. Exchange business cards and remember to follow up with a brief conversation or email thanking them for their time. Before you know it, you will be a pro in engaging other members, which will lead to career growth and prosperity. If you are not able to attend a Chapter meeting, [ASPE Connect](#) offers you a way to build your network online.

MEMBER BENEFIT TIP #2 - ASK A MEMBER FOR HELP

Being a member in ASPE enables you to call upon a friend for help. Your Chapter Officers know who does what. Call your [Chapter leaders](#) when you are stumped on the job and ask for help. More times than not, you will find a fellow member who is more than willing and able to assist you with your problem. If they can't help, kick it up to the [Region Director](#), and they will find you the help you need. ASPE members treat other members just like family; it's our single most valuable membership benefit.

MEMBER BENEFIT TIP #3 - BOOST YOUR INDUSTRY VISIBILITY

Demonstrate your abilities to lead and boost your industry visibility by volunteering to join your Chapter Board of Directors or apply to join the [Society Board of Directors](#). Employers, clients, and coworkers respect and look up to ASPE Chapter and Society Officers. Without our leaders, we would not have a Society; it's worth the work.

MEMBER BENEFIT TIP #4 - EXPAND YOUR KNOWLEDGE AND EARN CEUs

ASPE produces webinars for members to expand their knowledge of plumbing systems and design. Members pay about half the price as nonmembers and if the webinar is sponsored, members can participate for free, so this is a great member benefit. Hover over Education & Credentialing in the [aspe.org](#) main menu, and then click on [Webinars and Workshops](#). You can access current webinars as well as every webinar ASPE has ever held. Don't forget to recommend these to your colleagues and clients.

Through our special Read, Learn, Earn series, ASPE also can help you accumulate the CEUs required for maintaining your CPD or CPDT credential or other regulatory agency CEU programs for your Professional Engineer license. Here is how you do it. Go to [aspe.org](#), hover over Education & Credentialing, and in the left column you will see [Read, Learn, Earn](#). Click on it and it will take you to a page with the active materials. This benefit is free to members and \$35 for nonmembers. Download one of the articles, read, learn, and earn your CEUs. When you complete the payment screen, the system guides you through the questions and you can enter your answers directly into the system. (Note that members do NOT need to add a credit card.) Voila! If you get 90% correct, you will receive your 0.1 CEU in the email specified in your account.

MEMBER BENEFIT TIP #5 - TRACK YOUR CEUs

We've seen some extraordinary new things come out of ASPE in the past couple of years, but this benefit is as good as it gets. Did you know that you can track your CEUs in your member area on [aspe.org](#)? Well you can, and here is how:

1. Under Education & Credentialing in the [aspe.org](#) main menu, in the left column click on [Continuing Education](#). You have now entered the ASPE Education website.
2. In the menu click on [My Education](#). (You must be signed in to see My Education.) This takes you to your dashboard.
3. Under My Dashboard, click on Transcript/Achievements.

All of your ASPE-sponsored CEUs will already be populated in this table, but you can also add other CEUs from other sources. Simply click on the link toward the top of the table and the site will direct you to a page to add the session information and to upload a certificate.

This member benefit is invaluable in keeping your CEUs current, and it's only offered to members. Don't get caught empty-handed when the eventual audit for your credential comes around.

MEMBER BENEFIT TIP #6 - MEET POTENTIAL CLIENTS/MEMBERS

If you are an Affiliate member, in sales, who steps up and takes on a membership role, you are in a unique position to promote ASPE and your company. Your leadership role is a valuable way to place yourself in front of prospective clients and members. Talk to your Chapter Board of Directors and see what you can do to promote yourself and ASPE.

MEMBER BENEFIT TIP #7 - LEARN HOW TO MENTOR OTHERS

ASPE has mentor opportunities so you can help foster the career of another member. Opportunities are available for all members. Just click on [Mentoring Program](#) under Membership & Global Community on [aspe.org](#) for more information. Leave your mark on our Society.

MEMBER BENEFIT TIP #8 - ADD LETTERS TO YOUR NAME

We all market ourselves every day with everything we do, and ASPE can help with programs that can add letters to your name: our [Certified in Plumbing Design \(CPD\)](#), [Certified Plumbing Design Technician \(CPDT\)](#), and [Green Plumbing Design \(GPD\)](#) programs. These programs will help others instantly recognize your leadership and expertise in the plumbing design industry.

MEMBER BENEFIT TIP #9 - ACCESS YOUR ASPE ACCOUNT

Accessing your ASPE account has never been easier. Visit [aspe.org](#) and click on the [LOGIN](#) tab in the upper right-hand corner. If you know your username or email address and your password, enter them and you will be done. If you do not know your username and password but know your email address, click on the "Request a New Password" tab. A temporary password will be sent, but be sure to change it when you log in. If you do not know your username, you can try your last name followed by your member number, just the digits. For example: jones12345.

Having trouble logging in to your ASPE account or you can't remember your member number? No worries. Your Chapter Vice President, Membership has a roster with this information. Call or email them and they will be happy to help you access your account.

MEMBER BENEFIT TIP #10 - MEMBERSHIP RENEWAL

ASPE has made it easier than ever to renew your membership. Log in to [aspe.org](#) as you ordinarily do and then to the left of the login button is a green "[Join/Renew](#)" button. Just click and you'll be renewed in no time. **NOTE: If you have lapsed for more than 90 days, your account was purged from the membership database and you will need to reapply for membership.**

MEMBER BENEFIT TIP #11 - SPECIAL-INTEREST GROUPS

[ASPE Young Professionals \(AYP\)](#) is designed for young industry professionals looking to meet with peers to share experiences, exchange ideas about the plumbing design industry, and network with other Chapter members. The focus of AYP is to help young plumbing engineers, design professionals, and practitioners establish contacts and further the mission of the Society. ASPE members 35 years old and younger are all included in this special-interest group.

The core mission of the [Women of ASPE \(WOA\)](#) is to engage, retain, and advance women in the plumbing design industry, through education, leadership development, and networking opportunities. WOA is committed to bringing together women and assisting them to achieve their professional and personal goals.

MEMBER BENEFIT TIP #12 - ASPE TABLES

The [ASPE Plumbing Engineering & Design Handbook of Tables](#) is a tool to help members with pipe sizing, equations, and more. This information is available not only as a book, but it is also available in both the Apple App Store and in the Google Play Store, offering members a portable way to access these valuable tables from their phones. More recently, the tables have become available for download to your Mac or PC. Just visit the [ASPE Bookstore](#) and you can have these tables at your fingertips.

MEMBER BENEFIT TIP #13 - CAREER CENTER

ASPE's Career Center is a valuable tool for ASPE members seeking new jobs or those looking for experienced plumbing engineers to join their team. Just hover over Membership & Global Community in the [aspe.org main menu](#) and click on [Career Center](#) to get started.



HOSPITALITY



BARRIER-FREE

The Most Specified Brand in the Industry

**FIAT
PRODUCTS**



RESIDENTIAL



COMMERCIAL

Visit our website at
www.FIATPRODUCTS.com



Curtis Dady
(346) 287-6939
CurtisD@PMIreps.com

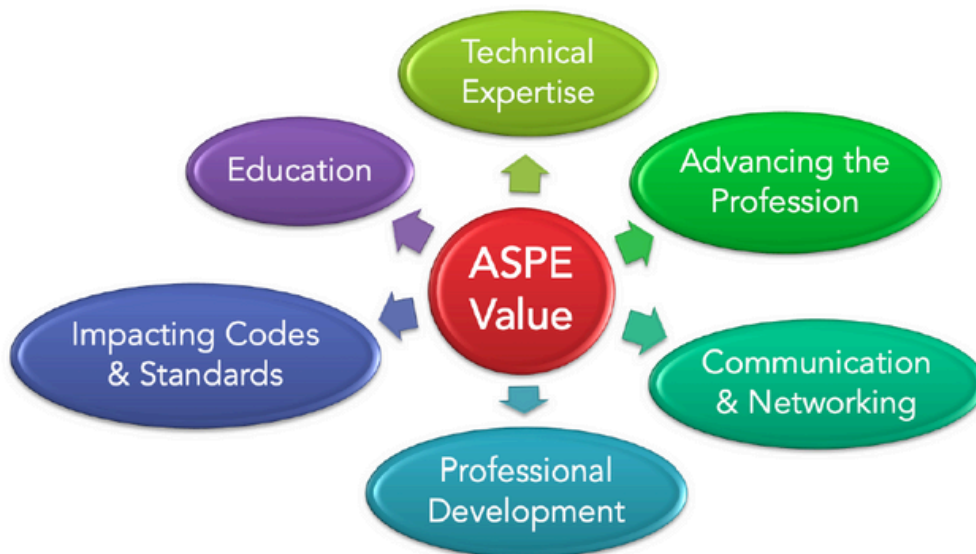


Connect with us
on Social Media!



ASPE Purpose

The core purpose of the American Society of Plumbing Engineers is to continually enhance and promote the profession of plumbing engineering design while assisting in improving the health, welfare, and safety of the public on a global scale.



CPDT CERTIFIED PLUMBING DESIGN TECHNICIAN®

HOW
THE

CPDT CREDENTIAL

CAN ACCELERATE YOUR CAREER IN PLUMBING ENGINEERING

Due to its niche nature, plumbing engineering offers a long, stable, and profitable career, but breaking into the profession can be challenging if employers aren't aware of your unique skills. That's where the Certified Plumbing Design Technician (CPDT) credential can help. As the only credential

specific to plumbing system designers early in their careers, the CPDT provides immediate recognition of individuals skilled in this trade.

That's why Ashley Turlington, CPDT, recommends earning the designation. "Companies seek candidates with credentials

pertinent to their field," she says. "The CPDT can open up a lot of professional opportunities."

DEMONSTRATE YOUR TECHNICAL KNOWLEDGE

Administered by the American Society of Plumbing Engineers (ASPE), the CPDT program provides a standard of professional competence in the practice of plumbing design at the technician level. Employers are assured that designers who have earned the CPDT credential have the requisite knowledge and skills to excel in their company. This is one of the primary reasons individuals pursue the designation. "I earned my CPDT credential to demonstrate my technical knowledge of plumbing, and it has given me better recognition as a well-rounded plumbing designer," says John Lansing, CPDT, LEED Green Associate.

VALIDATION OF YOUR ACCOMPLISHMENTS

Through its rigorous processes, the CPDT program identifies professionals who have demonstrated their expertise and abilities in the field of plumbing design. The certification exam tests an individual's proficiency in skills that employers desire, such as laying out systems, sizing calculations, selecting equipment, and preparing documentation. The test specifications and content reflect the abilities essential to performing at the technician level of a plumbing designer.

The CPDT credential gives you "more respect, validation of your accomplishments, and [subsequently] more compensation," says Justin Wroblewski, CPDT.

IMPROVE YOUR VALUE TO YOUR COMPANY

The CPDT program's recertification requirement means that CPDTs must stay current on new techniques and technologies through continuing education, which is a desirable trait to employers who are looking for an edge in the competitive MEP market. Having CPDTs on their staff showcases a firm's expertise and their commitment to maintaining the highest, most up-to-date design standards.

"My CPDT credential has allowed my company to get better jobs because clients view us as more knowledgeable," Turlington says.

And the benefit is mutual. "Taking the step to improve your value to your company will also benefit your career," says Wroblewski.

HOW TO ACCELERATE YOUR CAREER

The CPDT program is designed for plumbing system designers with less than eight years of professional experience, and the exam is held annually at online testing sites around the world. If you are planning on achieving ASPE's internationally renowned Certified in Plumbing Design (CPD) credential, the CPDT is an excellent starting point.



To learn more and start accelerating your career, visit www.aspe.org/education-credentialing/cpdt/cpdtexam

MEET THE GREAT BASIN™ FAMILY



San Antonio and Austin Approved!

Contact Zed Hernandez at 713.425.9888 or zed@championsmarketing.net to help you size your next project.



▲ Our new GB-1000 being installed at Costco in Independence, Missouri



REPRESENTED BY



Size your project with Grease Monkey.
GreaseMonkeySizing.com

LIFETIME GUARANTEED GREASE INTERCEPTORS



May

Courtney Bickerton

Richard James Bright LEEP AP

Maurice Jackson Hall P.E.

Kristopher Wayne Haycock Mr.

Chelsea Nicole Moussouni P.E., CPD

Christopher A. Phillips GPD, CPD

Jacob Enrique Prado CPD

Luke Daniel Rogers

Paul Joseph Stopper

Jay Sukhadia

ASPE Mentoring Program

This program, which is available to all members of the Society, has been designed to connect ASPE members who have a particular skill set (mentor) with individuals (mentee) who are searching to acquire the same skills to develop and make progress toward their personal and professional goals.

Who Is a Mentor?

A mentor is someone who can help the mentee develop skills for success and long-range career planning, is able to be a good listener, is willing to share experiences and views, is willing to commit time and effort, provides an “open door” to questions and problems, points out both strengths and opportunities for improvement, and has a vested interest in the growth and development of their mentee.

Benefits to the mentor:

- Satisfaction in helping someone mature, progress, and achieve goals
- Meeting and sharing experiences with other mentors
- Personal ongoing support to help the mentee succeed
- Personal fulfillment through contribution to the Society and the individual

Who Is a Mentee?

Having a mentor can contribute to a successful and satisfying career. Without a mentor, that learning occurs mostly through trial and error. With a mentor, even experienced professionals can benefit from the experiences and expertise of someone who has withstood the trial and can help the mentee avoid the mistakes. Similarly, those new to the industry will discover that being a mentee shortens the learning curve for acquiring the skills and knowledge most critical to a fruitful career.

Benefits to the mentee:

- Discover new talents about yourself
- Career satisfaction
- Expand your personal network
- Maximize your strengths

connect.aspe.org



AT LAST - IT'S ARRIVED!



Just what you've been waiting for!

Independent third-party performance verification under a US test protocol for a Physical Water Conditioner - the alternative to the conventional water softener.

- **AT LOW COST**
(You can't afford not to treat hard water anymore)
- **ZERO PLANT ROOM FOOTPRINT**
(Attaches to the wall or to pipe work)
- **ZERO SERVICING**
(No Salt)
- **ZERO MAINTENANCE**
(Which means it is 100% reliable)
- **WARRANTED FOR 20 YEARS**



Case Study: Panorama Towers, Las Vegas, NV.

Cost to install: **\$55,000 ✓**
 Savings over conventional softener in year one: **\$168,000 ✓**
 Estimated 3-year savings: **\$500,000 ✓**
 Annual Running Costs: **\$200**

Download the Engineer's Specifier Guide from www.aqua-rex.com

Scale Down. Soften Up.

aqua-rex.com 877-640-2170

AQUAREX



TEST REPORT

5001 E. Philadelphia Street
Ontario, California - USA 91761 - 2816
Ph: 909-472-4100 | Fax: 909-472-4243
<http://www.iapmort.org>

Report Number: 2536-18001-002 Project No.: 29225
 Report Issued: February 26, 2018.
 Client: Aqua-Rex
 3301 Spring Mountain Road Ste 18
 Las Vegas, NV 89102 Contact: Jonny Seccombe
 Source of Samples: The samples were shipped to IAPMO R&T Lab from Aqua-Rex, and received in good condition on October 11, 2017.
 Date of Testing: October 25, 2017 through December 15, 2017.
 Sample Description: Scale Prevention Device; model: Aqua-Rex WK1-E.
 Scope of Testing: The purpose of the testing is to determine the efficacy of the Scale Prevention Device per section 5 of IAPMO IGC 335-2018, entitled "Rapid Scaling Test for Scale Prevention Devices".

CONCLUSION: **When tested per Section 5 of IAPMO IGC 335-2018, Aqua-Rex WK1-E reduced scaling by 83% when applied to Las Vegas water heated to 180°F.**

Tested by,

Reviewed by,

Hank Ninh
Hank Ninh, Project Engineer

Sean Vu
Sean Vu, P.E., Manager, Specialty Projects

Pump Water. Not Oil.

ELV-Series Sump Pumps with OilTector® Control
Environmentally-friendly pump systems for elevator sumps, transformer vaults and areas where the discharge of oil into the environment is prohibited

Liberty Pumps®

A Family and Employee Owned Company

Represented Locally By:

WWIP Corporation

WWIPcorp.com

Arlington

600 112th Street - Suite A
Arlington, TX 76011
P: 214-920-8420

Houston

2516 E. Crosstimbers
Houston, TX 77093
P: 713-699-5778

OilTector®



Only One Tankless Is
Built to be the Best®



INFINITI® GS & GR TANKLESS GAS WATER HEATERS

- Robust stainless steel heat exchanger for longer life
- Residential and commercial applications
- Cascade and common venting between standard and recirculation models



BRADFORD WHITE
WATER HEATERS
Built to be the Best®



713-674-8735

www.pmi reps.com

©2024, Bradford White Corporation. All rights reserved



MECHLER-BLASS ASSOCIATES



**DILLARD
ASSOCIATES**

*American
Standard*

LIXIL

Andy Chantos

Leader: Architect and Design, Engineer,
Multi-family, Hospitality

American Standard Brands

Andy.Chantos@lixil.com

www.americanstandard.com |

www.dxv.com | www.grohe.com/us

LIXIL Link to Good Living

Mobile: 732-514-2908

Tiny valve-clogging bits of
debris, meet your match.


Introducing Ultima



Failed flush valves waste time, money and water. The Ultima Diaphragm Flush Valve features a self-cleaning wiper spring that clears the refill orifice with every flush, preventing clogs and run-on before they start. It's the very tiny big idea you've been waiting for. After 150 years, American Standard knows what you need in reliable bathroom performance.



MediTrac[®]
Flexible Medical Gas Piping by OmegaFlex[®]



Up to 5x faster installation. 100% more time for patient care.

Rarely does a product come along that lowers costs and risks while adding more time for patient care. MediTrac[®] rolls out these benefits and more with patented, bendable, long-length corrugated copper alloy medical tubing. Up to 70% fewer fittings. Up to 80% less hot work. Up to 5 times faster installation and up to 55% less cost* without closing sections of your facility. Now that's ingenuity on a roll.

* Typical installations reveal total cost savings of 55% or more.



OmegaFlex[®]
1.800.355.1039 | MediTrac.US

MediTrac fully complies
with NFPA 99-2018

MTUS-530 REV 06/19

© OmegaFlex 2019